

22 Harper Street MELTON SOUTH VIC

4 2 2

. This amazing family home located in the sought-after Maplewood Estate sits in close proximity to all the amenities you ever need, with parks, Opalia Shopping Centre and Melton South Village and the Melton South Train Station, and all levels of schooling only a short distance away!

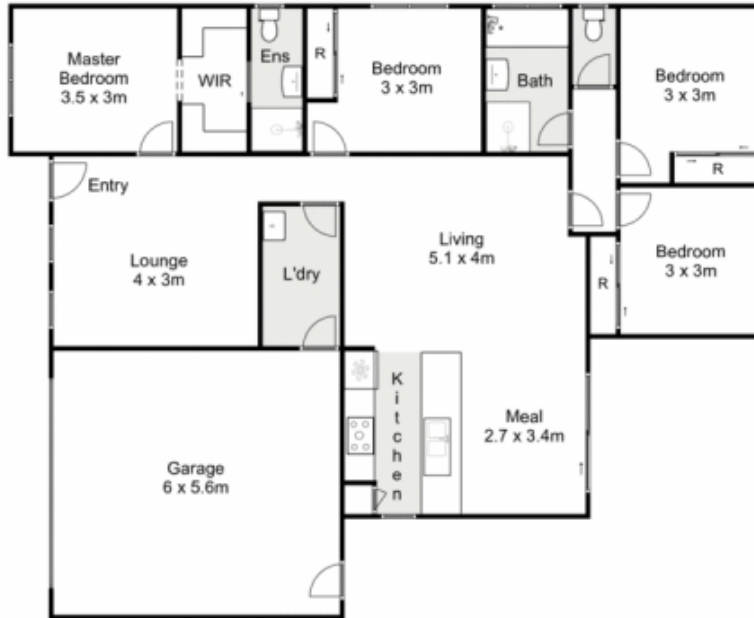
. Upon entry you are greeted with the formal lounge room which is large in size creating an ideal space for the growing family. The large sized master bedroom situated at the front of the home offers optimal space complete with a large walk-in robe and stunning ensuite. The remaining three bedrooms all feature built in robes and are serviced by the well-appointed central bathroom.

. Entering the heart of the home you are met by the gorgeous kitchen which features ample bench and cupboard space, dishwasher and a 900mm gas cooktop. All of this seamlessly incorporating the large open plan

Building Size : 20 Sqrs
Land Size : 447 sqm
View : <https://www.ypa.com.au/8044011>



Julie Hedley
0420 996 194



22 Harper Street, Melton South

ypa

Whilst every attempt has been made to ensure the accuracy of the floor plan contained here, measurements of doors, windows, rooms and any other items are approximate and no responsibility is taken for any error, omission, or mis-statement. This plan is for illustrative purposes only and should be used as such by any prospective purchaser. The services, systems and appliances shown have not been tested and no guarantee as to their operability or efficiency can be given.

