



16 Isherwood Road Deanside VIC

4 2 1

Located in the rapidly growing estate of Deanside, this stunning home presents an exceptional opportunity for first home buyers, downsizers, or savvy investors.

Highlights of this Beautiful home:

? Spacious Living: Featuring high ceilings and four fitted bedrooms, including a master bedroom with a walk-in robe (WIR) and a luxurious ensuite.

? Modern Kitchen: Enjoy a spacious, modern kitchen complete with Caesarstone benches and stainless-steel appliances, seamlessly adjoining the meals and family area for an open-plan living experience.

? Convenient Features: Benefit from a single lock-up garage with internal access, refrigerated cooling, and ducted heating.

? Low maintenance living

Prime Location:

? Close Proximity: Situated near Caroline Springs and

Price : \$620,000 - \$640,000

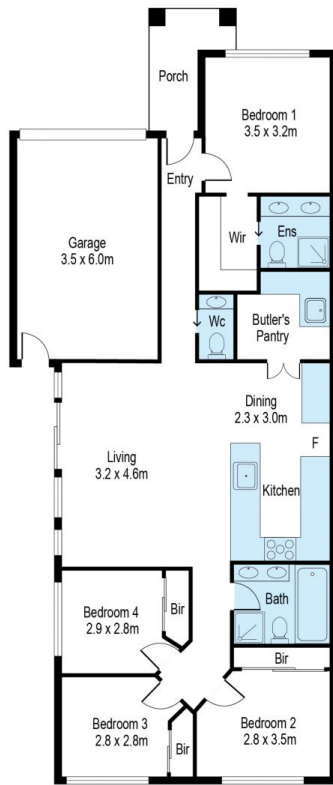
View : <https://www.ypa.com.au/8047714>



Gavin Fouts
0401 178 636



Nancy Crupi
0413 969 284



Scale in metres. Indicative only. Dimensions are approximate. All information contained herein is gathered from sources we believe to be reliable. However we cannot guarantee its accuracy and interested persons should rely on their own enquiries

16 Isherwood Road, Deanside