



## 9 Parkview Drive Sunbury VIC

2 2 2

Perfectly located in a much sought after and tightly held pocket of the Jacksons Hill Estate is this rare opportunity offering its own hidden oasis as well as a magnificent outlook over the Kathleen Aitken Park on a great size lot of approx 554m2.

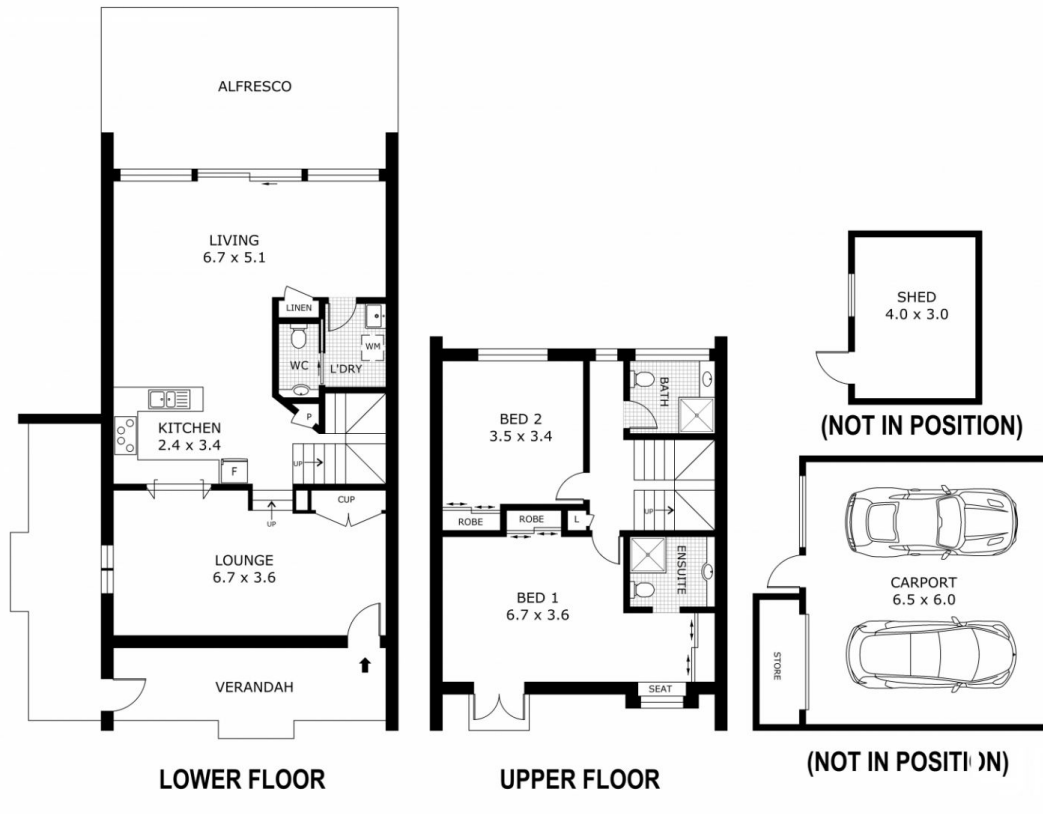
With amazing character inside and out, this townhouse offers a cozy formal lounge room on entry leading to a well thought out kitchen with plenty of prep space, 900mm stainless steel oven, great storage all adjoining a light filled open plan living area and study nook. Upstairs offers a master bedroom looking out to parkland, robes and ensuite with a second bedroom with robes, and central bathroom.

Like reading through a House & Garden magazine, outside simply stuns as you enjoy outdoor living under a great size pergola showcasing a surprisingly low maintenance and

**Price** : \$680,000 - \$730,000  
**Land Size** : 554 sqm  
**View** : <https://www.ypa.com.au/8052729>



**Nic Owen**  
 0422 107 177



Disclaimer: All images, views and diagrams are indicative only. Dimensions, areas and landscape are indicative and subject to change without notice. Purchasers should check the plans and specifications included in the terms of the contract of sale carefully prior to signing the contract.