



## 19 Longmire Court Sunbury VIC

4 2 2

Nestled in a tranquil court location surrounded by wetlands and a playground directly across the home and on a generous 730m<sup>2</sup> block, this remarkable 32sq split-level home is a masterpiece of custom finishes, sure to impress even the most meticulous buyers. Boasting 9ft ceilings with tall doors, solid porcelain tiles, and square set corning throughout, this home exudes individuality and unparalleled quality.

The clever floorplan offers space for the whole family. At the front of the home, a large separate living area provides a perfect retreat, and provides a separate adjoining room that can be used as a play zone for kids or teens, or turn it into a study or adult retreat space. The open-plan galley-style kitchen, featuring waterfall stone benchtops, a walk-in pantry, ample bench space, gas cooktop, 900mm under-bench oven, dishwasher, and built-in wine rack, is a

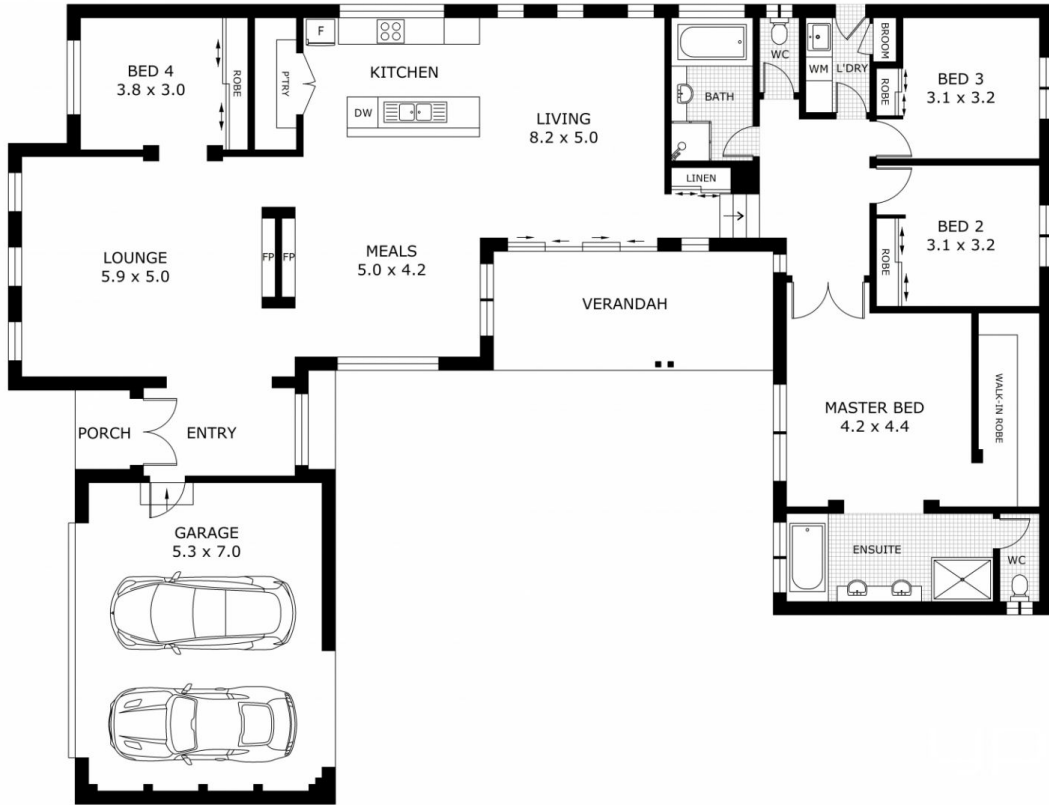
**Price** : \$ 850,000  
**Land Size** : 730 sqm  
**View** : <https://www.ypa.com.au/8053770>



**Lisa Totaro**  
0410 144 215



**Cassandra Doria**  
0497 972 028



Disclaimer: All images, views and diagrams are indicative only. Dimensions, areas and landscape are indicative and subject to change without notice. Purchasers should check the plans and specifications included in the terms of the contract of sale carefully prior to signing the contract.