



## 40 Main Street AINTREE VIC

3 2 1

Situated in the beautiful suburb of Aintree, this stunning brand-new townhouse holds a great opportunity for everyone. Located a short walk from the vibrant Woodlea Town Centre, restaurants, Aintree Primary School, Bacchus Marsh Grammar providing shopping and education at your doorstep. These amenities are further complimented by the large and upgraded parks and walking tracks located throughout the suburb.

From your first glance at this property, you will be wowed with the low maintenance living it provides. Mulched front yards with freshly planted rosemary leaves provide a comforting welcome to your new home. Upon entry the 9-foot ceilings accompanied by the square set corning create a quality feeling that is present throughout the entirety of the home.

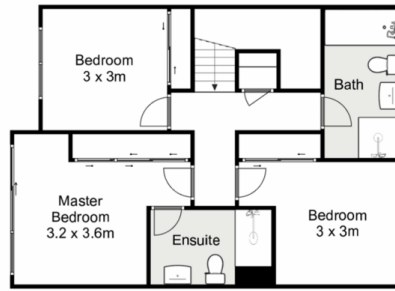
**Price** : \$579,000 - \$609,000  
**Land Size** : 175 sqm  
**View** : <https://www.ypa.com.au/8054707>



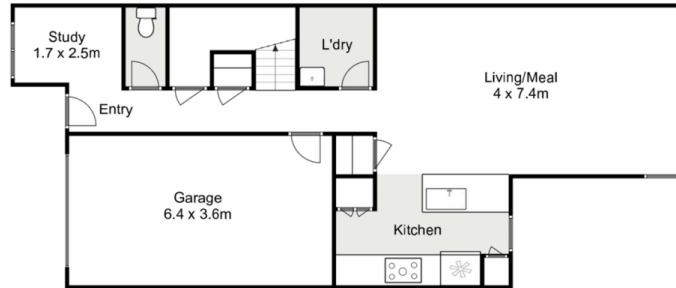
**Shane Spiteri**  
 0488 980 115



**Ricky Frew**  
 0402 007 100



First Floor



Ground Floor

## 40 Main Street, Aintree

ypa

Whilst every attempt has been made to ensure the accuracy of the floor plan contained here, measurements of doors, windows, rooms and any other items are approximate and no responsibility is taken for any error, omission, or mis-statement. This plan is for illustrative purposes only and should be used as such by any prospective purchaser. The services, systems and appliances shown have not been tested and no guarantee as to their operability or efficiency can be given.

