

22 Evesham Drive Point Cook VIC

4 2 2

Introducing an unparalleled lifestyle opportunity at 22 Evesham Drive, Point Cook, YPA Point Cook proudly presents this exquisite Metricon masterpiece. Step into luxury across approximately 40 square feet of meticulously designed living space where functionality meets design excellence.

Embrace the abundant natural light that fills every corner of this four-bedroom sanctuary, complemented by five expansive living areas crafted with elegance and space in mind. Conveniently located near Sanctuary Lakes Shopping Centre, the tranquil Saltwater Reserve, and the vibrant Gramercy Boulevard Playground, this home offers seamless access to endless family activities, including public BBQs and a children's playground. Educational needs are met with proximity to Saltwater P9 School and Lumen Christi Catholic Primary School.

Price : \$ 1,053,000

View : <https://www.ypa.com.au/8055869>

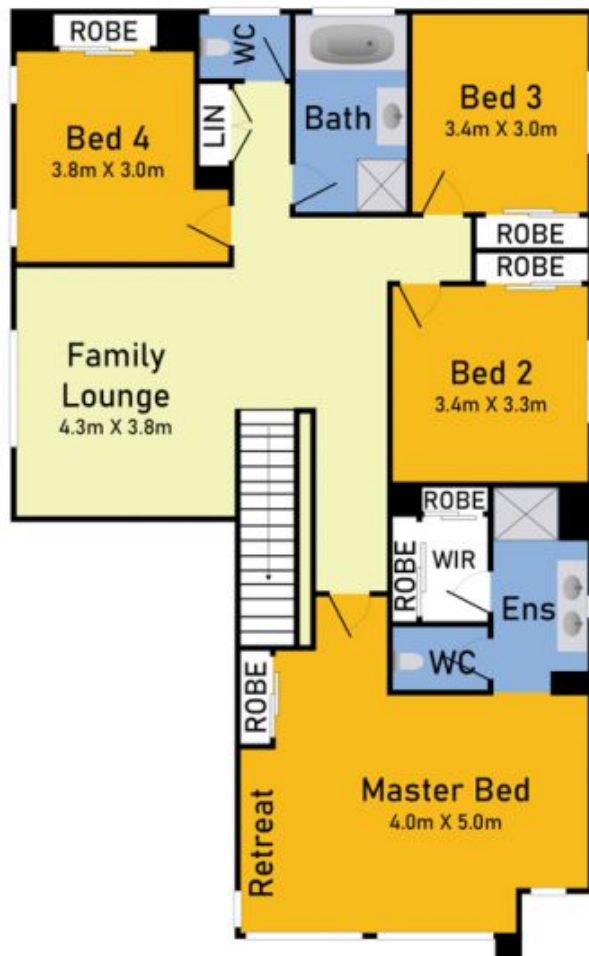


Pardeep Chahal
0431 595725

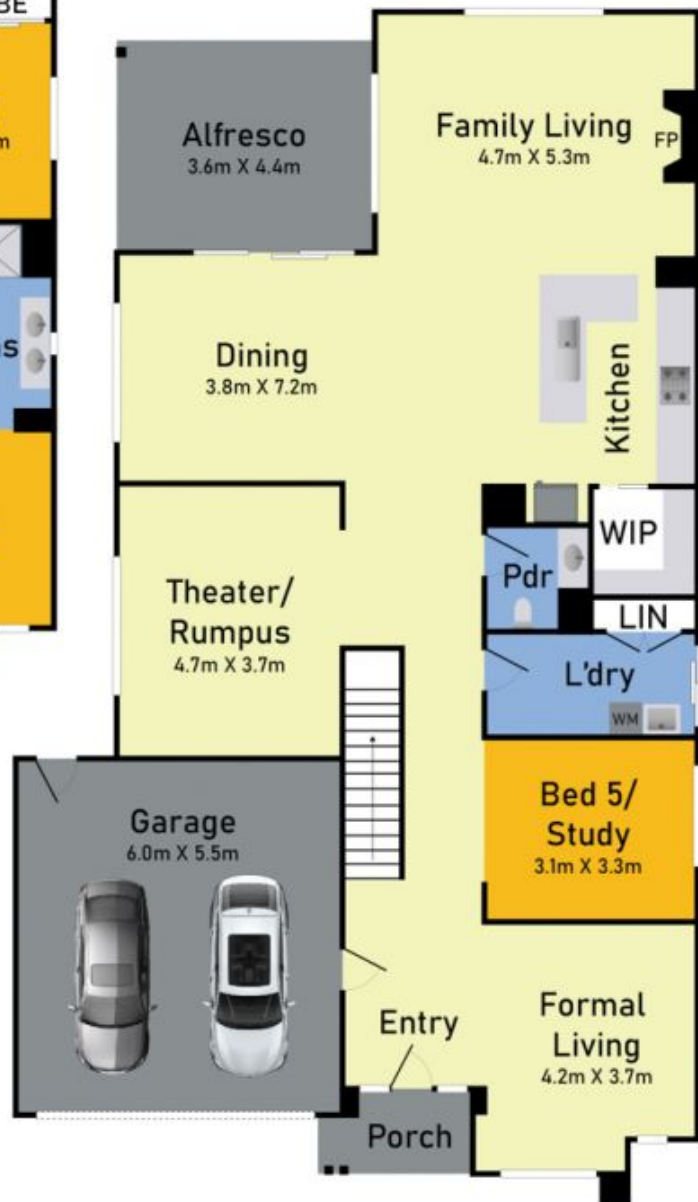


Manjot Bawa
0433 853 301

First Floor



Ground Floor



22 Evesham Drive, Point Cook

* Dimensions are approximate and for illustrative purposes only

ypa