



## 13 Anne Drive Dromana VIC

5 🛏 3 🚿 3 🚗

Welcome to the warm seaside charm and cosy rural appeal of 13 Anne Drive - where coast and country meet in the most beautiful way.

Perched high up on coveted Dromana Hill, this impressive family residence features five bedrooms, three bathrooms, and two expansive living rooms, complemented by a spacious kitchen and dining area perfect for entertaining guests.

The home also features a huge self-contained one bedroom, one bathroom ground level apartment with dual entry and independent access - perfect for those seeking in-law accommodation, home office/practice space, secondary primary suite, or guest quarters. This fantastic additional space also enjoys its own north facing private patio and outdoor garden.

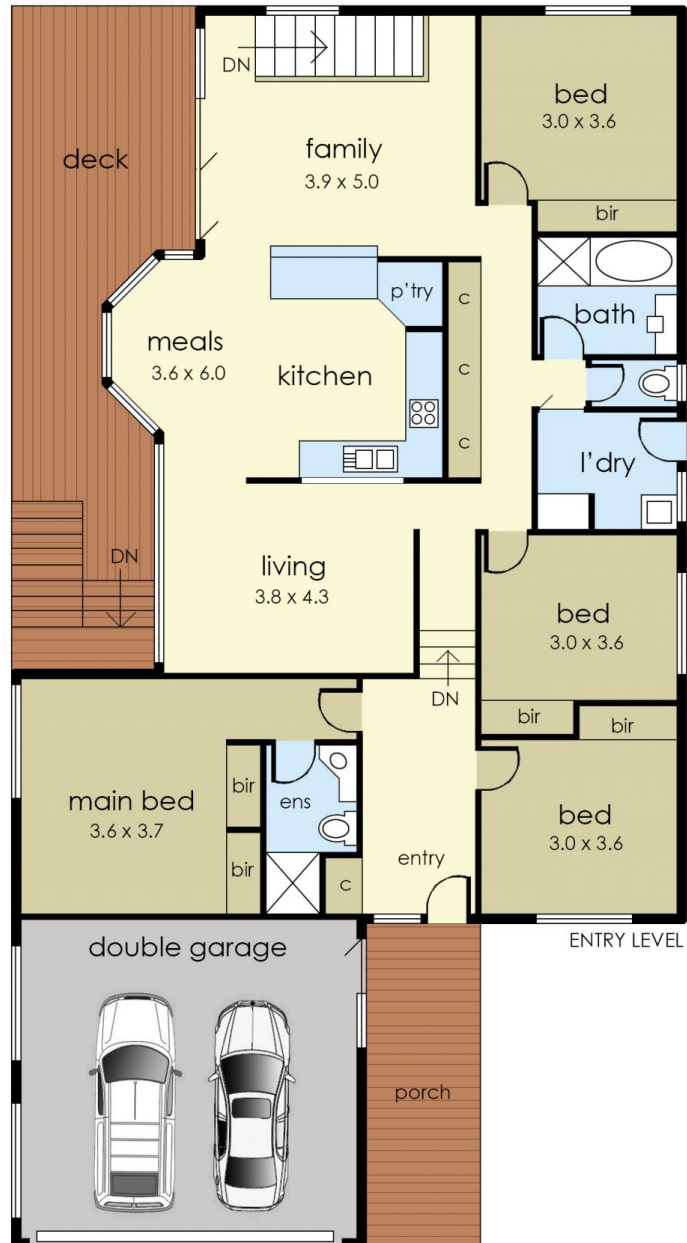
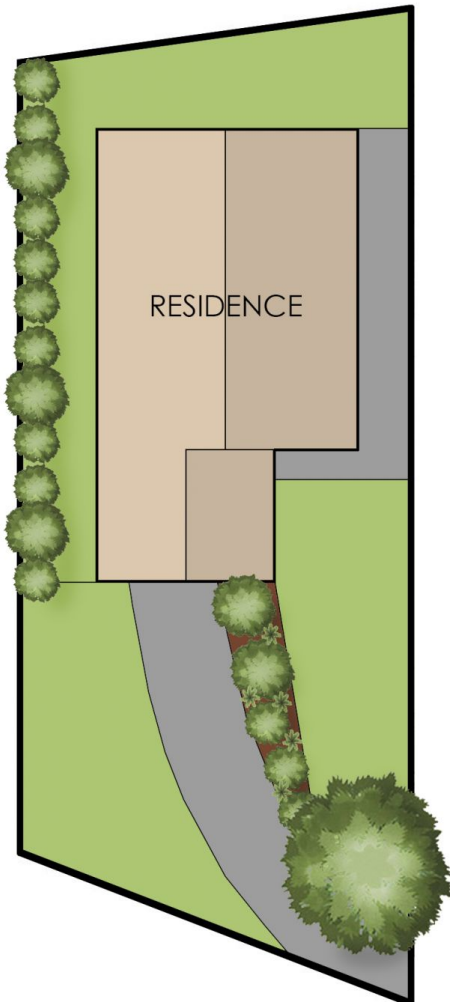
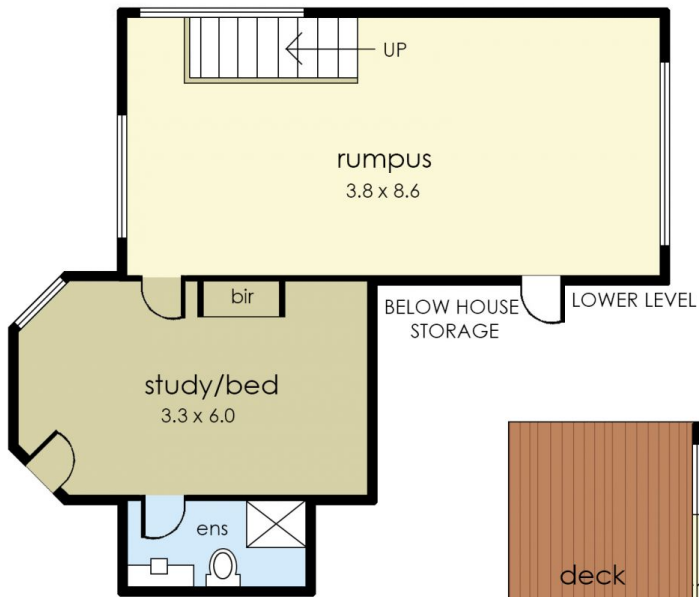
**Price** : \$1,170,000 - \$1,250,000  
**Land Size** : 641 sqm  
**View** : <https://www.ypa.com.au/8055883>



**Tony Talarico**  
0420 778 401



**Katrina Talarico**  
0420 778 404



# 13 Anne Drive, Dromana

© Produced by DND Floor Plans

This floorplan is for illustration purposes only and no warranty is given to its accuracy. Purchasers are advised to carry out their own investigations.