

24 Acumin Street BROOKFIELD VIC

4 2 1

Take advantage of this stunning home, located directly across the road from a massive park/playground, in the heart of Brookfield. This property is close by to all amenities such as schools of all levels, public transport, upcoming schools and shopping centre, and freeway access.

This low maintenance open plan home has everything you could possibly need. As you walk in you are greeted by the generously sized master bedroom, featuring a walk-in and bright ensuite.

Moving down the spacious hallway, the property opens up to the large open theatre room, providing the perfect space for the family movie nights. The heart of the home features the open plan family and meals area which perfectly incorporates the modern kitchen with ample bench space,

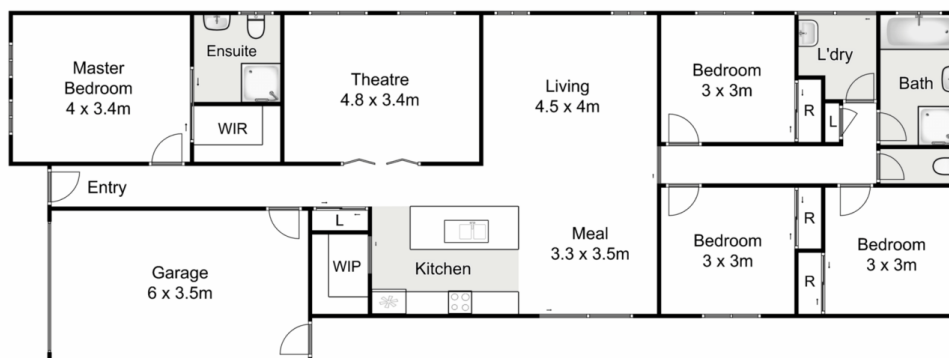
Price : \$ 520,000
Land Size : 379 sqm
View : <https://www.ypa.com.au/8056889>



Ryan Anders
0434 900 300



Shane Spiteri
0488 980 115



24 Acumin Street, Brookfield

Ypa

Whilst every attempt has been made to ensure the accuracy of the floor plan contained here, measurements of doors, windows, rooms and any other items are approximate and no responsibility is taken for any error, omission, or mis-statement. This plan is for illustrative purposes only and should be used as such by any prospective purchaser. The services, systems and appliances shown have not been tested and no guarantee as to their operability or efficiency can be given.

