



17 Glenfield Avenue MELTON WEST VIC

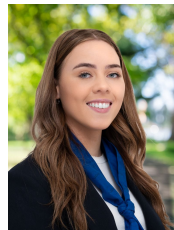
5 4 2

Located in the serene Westlake Estate on a spacious 769m² block, this exquisite family home is close to schools, shopping, parks, and transport.

Upon entering, you'll be captivated by the grand staircase, elegant porcelain tiles, and abundant natural light. The ground floor features a formal living area, a study that can serve as an extra bedroom, and a large guest bedroom with a stylish bathroom.

The heart of the home is an expansive kitchen with stainless steel appliances, a 900mm oven, a dishwasher, and a granite island bench, seamlessly connecting to an open-plan meals and living area. A spacious rumpus room at the rear offers flexibility for a billiard table, playroom, or theatre.

Price : \$899,000 - \$959,000
Land Size : 769 sqm
View : <https://www.ypa.com.au/8065103>



Tahlia Hall
0422 419 589



17 Glenfield Avenue, Harkness

ypa

Whilst every attempt has been made to ensure the accuracy of the floor plan contained here, measurements of doors, windows, rooms and any other items are approximate and no responsibility is taken for any error, omission, or mis-statement. This plan is for illustrative purposes only and should be used as such by any prospective purchaser. The services, systems and appliances shown have not been tested and no guarantee as to their operability or efficiency can be given.

