



## 71 Grace Street MELTON SOUTH VIC

3 2 2

Situated on a large 586m<sup>2</sup> (approx.) block of land, this charming home has been meticulously cared for by its current owners, making it the perfect opportunity to move straight in. Located in a highly sought after pocket in Melton South close by to all levels of schooling, childcare and preschool centres, parks, freeway access, and only a short walk to the Melton Train Station, the positioning of this home is hard to beat.

The front of the property offers not only privacy but security with a front fence and gated carport with a sizable concreted porch to enjoy your morning coffee. With extensive concreting all your car parking is made easy with multiple options.

Walking through the front door you are met with a foyer, giving the sense of space as to what is offered with the new

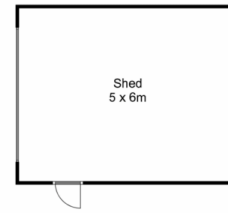
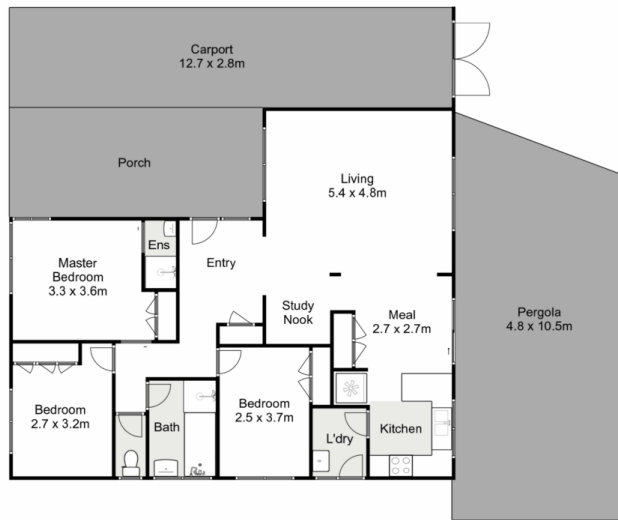
**Price** : \$ 485,000  
**Land Size** : 581 sqm  
**View** : <https://www.ypa.com.au/8066185>



**Ryan Anders**  
0434 900 300



**Britteny Cooke**  
0426 211 338



## 71 Grace Street, Melton South

Ypa

Whilst every attempt has been made to ensure the accuracy of the floor plan contained here, measurements of doors, windows, rooms and any other items are approximate and no responsibility is taken for any error, omission, or mis-statement. This plan is for illustrative purposes only and should be used as such by any prospective purchaser. The services, systems and appliances shown have not been tested and no guarantee as to their operability or efficiency can be given.

