



15 Bateman Drive HARKNESS VIC

4 🏠 2 🚗 2 🚗

Located in the high-demand suburb of Harkness, close to multiple sought-after schools, parklands, playgrounds, shopping, and much more, it is easy to see why the area is in such high demand with investors and families.

Price : \$499,900 - \$549,000

View : <https://www.ypa.com.au/8066292>

Walking up to the front door, you will notice the Colourbond roofing, with a modern façade and low maintenance gardens. Upon entry, you are met with the master bedroom, which features abundant natural light and is further complimented by a walk-in robe, and a stunning ensuite. The remaining three bedrooms are great in size, feature built-in robes, and are serviced by a bright central bathroom with the same quality as the ensuite.

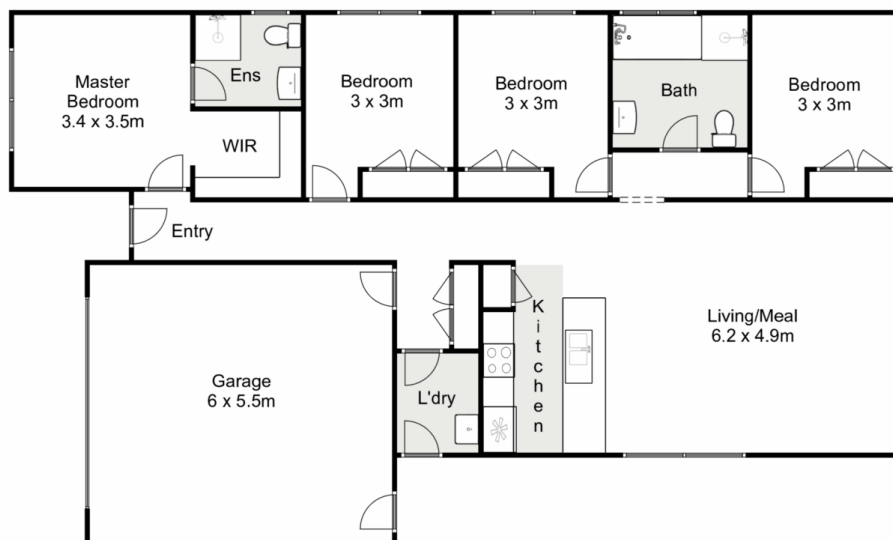


Ryan Anders
0434 900 300



Kate McGlone
0401 853 244

The heart of the home offers a modern kitchen complete with all the necessities such as stone bench tops, ample bench and storage space and stainless-steel gas cooktop,



15 Bateman Drive, Harkness

YPA

Whilst every attempt has been made to ensure the accuracy of the floor plan contained here, measurements of doors, windows, rooms and any other items are approximate and no responsibility is taken for any error, omission, or mis-statement. This plan is for illustrative purposes only and should be used as such by any prospective purchaser. The services, systems and appliances shown have not been tested and no guarantee as to their operability or efficiency can be given.

