



1/3 Crestmont Drive MELTON SOUTH VIC

4 2 1

Situated in the sought after location of Melton South, this property sits in close proximity to all amenities including: Melton Train Station, Melton South Square Shopping Centre, Woodgrove Shopping Centre, all levels of schooling, parks, freeway access and so much more, this property is the perfect opportunity for downsizing or investors.

This low maintenance open plan home has everything you could possibly need. As you walk in you are greeted by the spacious formal living area, providing that additional entertaining space for the family. As you continue through you are met by a generously sized master bedroom, featuring a walk-in robe and modern ensuite. The remaining three bedrooms of this home are all great size with two that feature built in robes with mirrored sliding doors, providing both functionality and a touch of elegance.

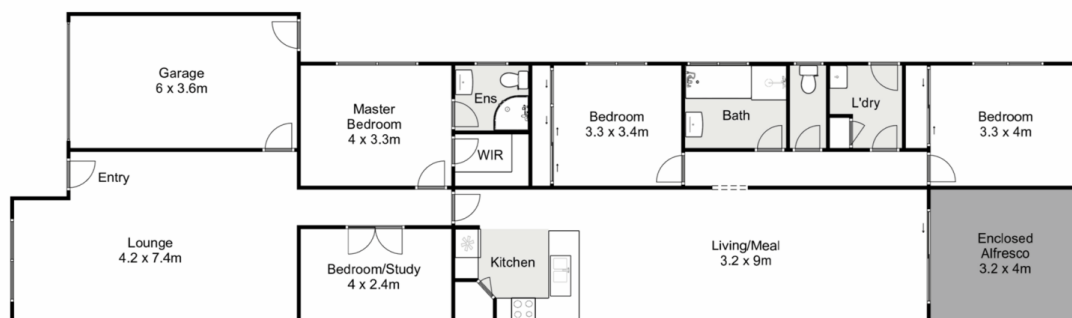
Price : \$539,000 - \$579,000
Land Size : 351 sqm
View : <https://www.ypa.com.au/8067866>



Ryan Anders
0434 900 300



Britteny Cooke
0426 211 338



1/3 Crestmont Drive, Melton South

YPA

Whilst every attempt has been made to ensure the accuracy of the floor plan contained here, measurements of doors, windows, rooms and any other items are approximate and no responsibility is taken for any error, omission, or mis-statement. This plan is for illustrative purposes only and should be used as such by any prospective purchaser. The services, systems and appliances shown have not been tested and no guarantee as to their operability or efficiency can be given.

