



23 Panorama Drive Tootgarook VIC

3 1 1

This immaculate three bedroom, one bathroom mid-century style family home set on a huge allotment of over 1,072*m2, will be sure to impress and delight!

Neat as a pin, the light filled interiors of this fantastic coastal abode highlight original details including exposed beam timber lined ceiling, feature brick wall and built in bookcase to the lounge room, slate tiles to the main bathroom, original light fittings, and wide floor to ceiling windows that fill the home with an abundance of natural sunlight.

Further features include a warm gas log fire, split system cooling, built-in robes, and a cool neutral colour scheme throughout.

Beyond the property's charm lies its unbeatable location!

Price : \$ 775,000

Land Size : 1072 sqm

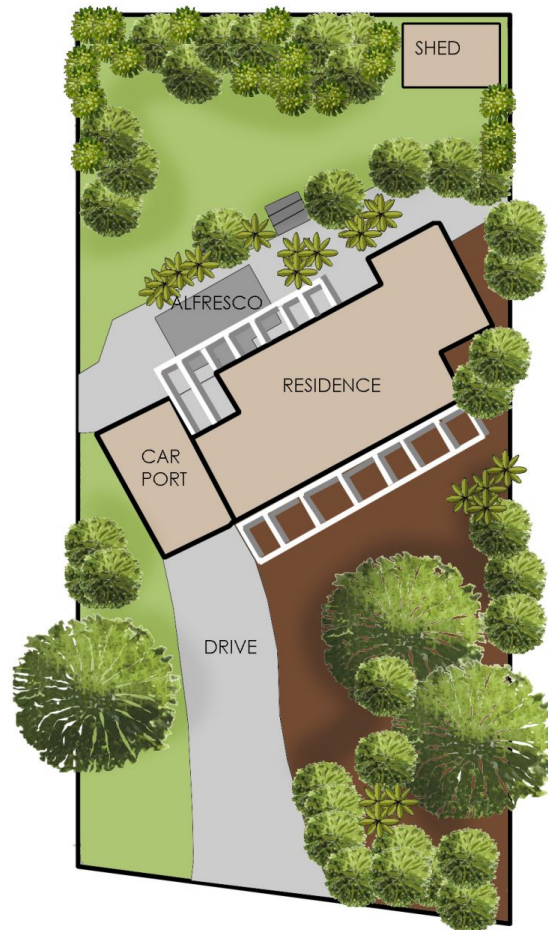
View : <https://www.ypa.com.au/8068300>



Tony Talarico
0420 778 401



Sharnara Ryan
0457 186 833



23 Panorama Drive, Tootgarook

© Produced by DND Floor Plans

This floorplan is for illustration purposes only and no warranty is given to its accuracy. Purchasers are advised to carry out their own investigations.