

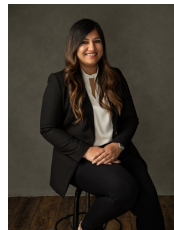
## 55 Blackhazel Crescent CLYDE NORTH VIC

3  2  2 

Experience elevated family living in this contemporary 3-bedroom, 2-bathroom family home perfectly positioned across from Ramleigh Primary School. Immerse yourself in this home's luxury with a stunning outdoor living and dining space, a spacious central living zone, high-end interiors, and a top-of-the-line security system.

Step into an inviting oasis as you enter the light-filled central living zone, with gorgeous wooden floors flowing through the open floorplan. Expansive windows flood the space with natural light, instantly creating a soothing ambiance that will instantly put you at ease. Unleash your inner chef in the modern kitchen, featuring a spacious walk-in pantry, sleek white cabinetry, and high-end stainless-steel appliances, including a dishwasher. It effortlessly flows into an open-plan dining zone and inviting lounge. Step outside to the remarkable covered alfresco

View : <https://www.ypa.com.au/8069317>



**Nidhi Mahajan**  
0416 013 196