

## 2/2-4 Talia Court MELTON SOUTH VIC

2 1 1

Nestled in a peaceful and convenient court, this property is just a quick drive from essential amenities. Enjoy the proximity to Woodgrove Shopping Centre, schools of all levels, freeway access, parks, Melton Train Station, Melton South Square Shopping Centre, childcare, and more! This home is an ideal opportunity for first-time buyers and investors alike.

As you enter, you're greeted by a spacious living and dining area, enhanced by a bright colour scheme perfectly complemented by distinctive exposed trusses and floorboards that flow throughout the home.

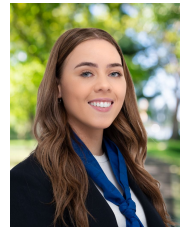
The large open plan living, and meals area is overlooked by the neat kitchen, features a freestanding gas cooktop and oven for style and practicality as well as boasts plenty of bench and cupboard space.

**Price** : \$359,000 - \$389,000

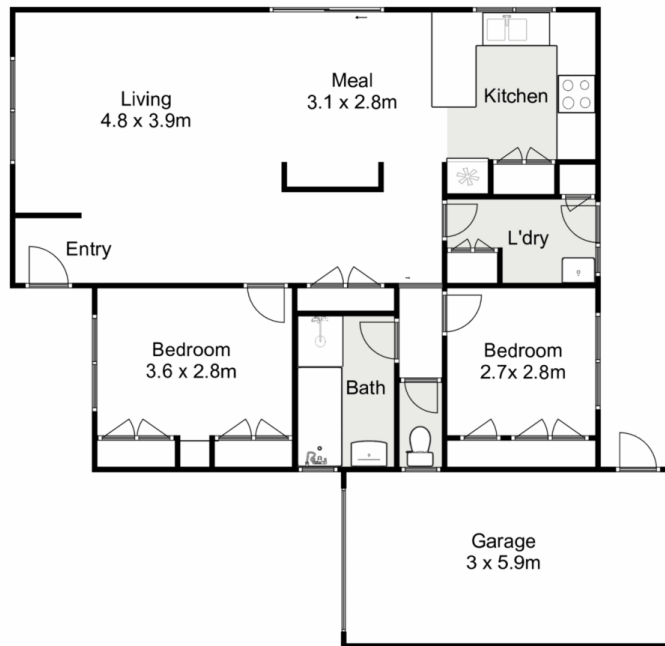
**View** : <https://www.ypa.com.au/8072343>



**Shane Spiteri**  
0488 980 115



**Tahlia Hall**  
0422 419 589



## 2/2-4 Talia Court, Melton South

ypa

Whilst every attempt has been made to ensure the accuracy of the floor plan contained here, measurements of doors, windows, rooms and any other items are approximate and no responsibility is taken for any error, omission, or mis-statement. This plan is for illustrative purposes only and should be used as such by any prospective purchaser. The services, systems and appliances shown have not been tested and no guarantee as to their operability or efficiency can be given.

