



6 Wildwood Road Aintree VIC

4 2 2

THE VENDOR IS CONSIDERING ALL REASONABLE OFFERS

Tucked away in a prestigious location stands a majestic spacious family home with 31 squares approx., multiple living areas and a functional floorplan to put on the top of your priority list. Positioned conveniently within moments to Bacchus Marsh Grammar School, Woodlea Town Centre, public transport, western highway and walking tracks/reserves/park lands at your fingertips.

YPA is proud to present this Carlisle Ex-Display home that offers the perfect combination of practicality and comfort nestled in a highly respected Woodlea Estate and is nothing short of outstanding.

Features include:

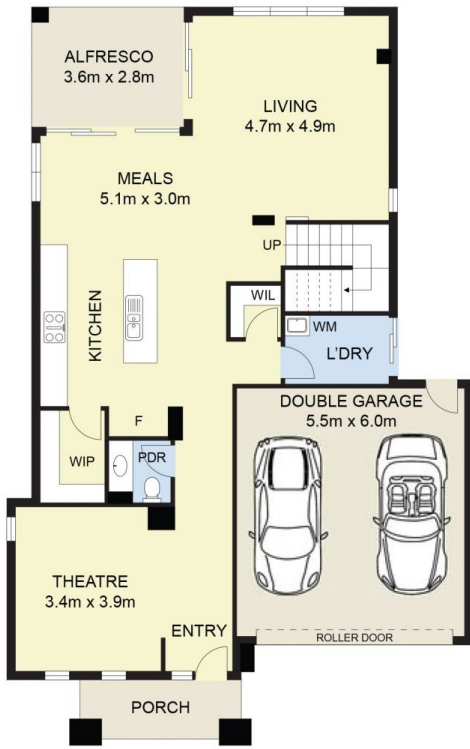
Price : PRIVATE SALE | \$920,000 - \$980,000
Land Size : 512 sqm
View : <https://www.ypa.com.au/8072729>



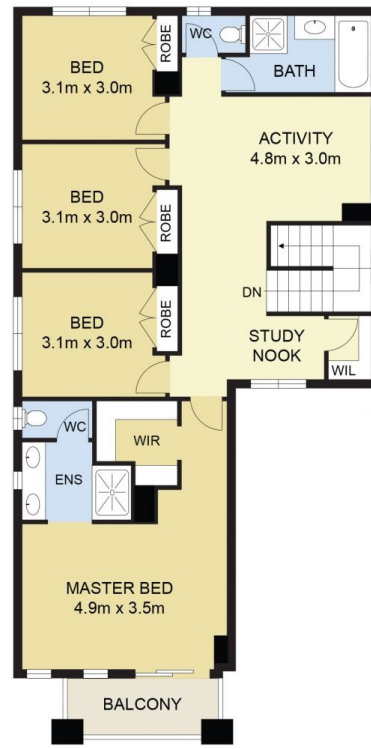
Andrew Migliorisi
0432 526 844



Stephen Azzopardi
0402 012 554



GROUND FLOOR



FIRST FLOOR



SITE PLAN
(NOT TO SCALE)

6 Wildwood Road, Aintree



DISCLAIMER : ALL DIMENSIONS ARE AN APPROXIMATION ONLY AND NO GUARANTEE IS GIVEN WITH RESPECT TO ACCURACY.