



4 Wildwood Road Aintree VIC

4 2 2

Immaculately maintained, presented to perfection and not to mention the fantastic location with all amenities nearby including Bacchus Marsh Grammar School, Woodlea Town Centre, public transport, western highway and walking tracks/reserves/park lands at your fingertips. YPA is proud to present this Carlisle Ex-Display home that offers the perfect combination of practicality and comfort nestled in a highly respected Woodlea Estate and is nothing short of outstanding.

Features include:

- ? Master bedroom showcases a walk-in wardrobe and ensuite with double vanity and quality fittings
- ? Additional three spacious bedrooms with built-in wardrobes (one with walk-in wardrobe)
- ? Formal lounge or theatre room
- ? The kitchen is located perfectly to incorporate the meals

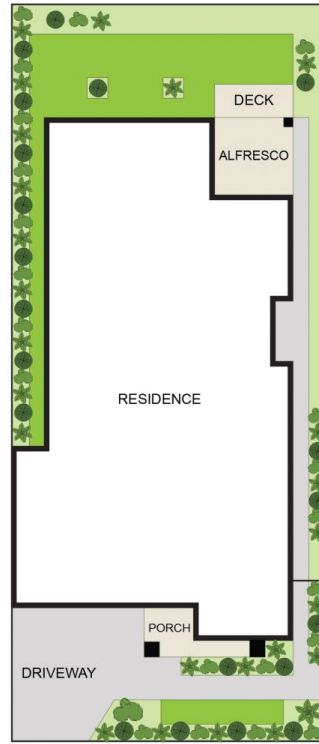
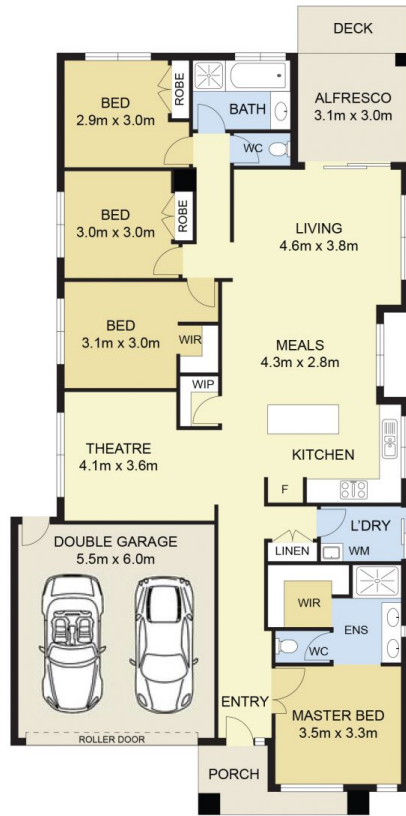
Price : \$ 780,000
Land Size : 448 sqm
View : <https://www.ypa.com.au/8072730>



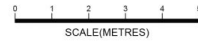
Andrew Migliorisi
0432 526 844



Stephen Azzopardi
0402 012 554



SITE PLAN
(NOT TO SCALE)



4 Wildwood Road, Aintree

DISCLAIMER : ALL DIMENSIONS ARE AN APPROXIMATION ONLY AND NO GUARANTEE IS GIVEN WITH RESPECT TO ACCURACY.