



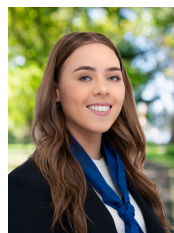
10 Glamis Place MELTON WEST VIC

6 2 4

Ideally located in Melton West, close by to all levels of schooling, parks, shops, Woodgrove Shopping Centre and public transport, this large family domain is one not to be missed. Sitting on a large 581m²(approx.) block, this double story home is perfect to accommodate a growing family.

Stepping through the front door, you'll immediately notice the generously sized lounge and meals area, designed to comfortably accommodate the entire family. This inviting space is enhanced by a reverse cycle split system and wall heater, ensuring comfort in all seasons. Large windows allowing natural light to flood in and illuminate the beautiful floorboards. Overlooking this area is a spacious kitchen, featuring ample bench and cupboard space, a dishwasher, and a brand-new oven and cooktop, making it a delight for any home chef.

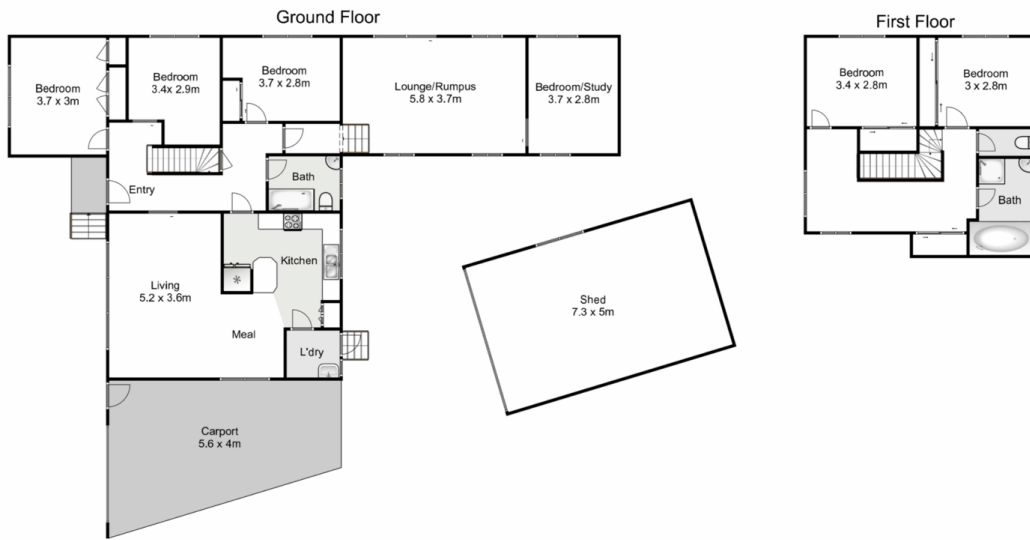
Price : \$ 599,000
Land Size : 580 sqm
View : <https://www.ypa.com.au/8073457>



Tahlia Hall
0422 419 589



Junior MuBashar
0450 644 606



10 Glamis Place, Melton West

ypa

Whilst every attempt has been made to ensure the accuracy of the floor plan contained here, measurements of doors, windows, rooms and any other items are approximate and no responsibility is taken for any error, omission, or mis-statement. This plan is for illustrative purposes only and should be used as such by any prospective purchaser. The services, systems and appliances shown have not been tested and no guarantee as to their operability or efficiency can be given.

