



## 18 Strathearn Drive Sunbury VIC

4 2 2

Nestled in the highly sought-after Strathearn Glen Estate, this fantastic family home is situated on a generous 816m<sup>2</sup> (approx.) block, offering an exceptional blend of comfort, convenience, and ample space for everyone. A clever floorplan is designed to cater to the needs of a growing family, this residence boasts four well-appointed bedrooms, each featuring built-in robes, while the master suite includes a walk-in robe and a private ensuite for added luxury and convenience.

With TWO living spaces, the front L-shaped lounge provides a cozy space to relax and unwind, seamlessly flowing into the well-equipped kitchen and adjoining meals area. This modern kitchen is a chef's delight, featuring a gas cooktop, electric oven, dishwasher, and a large walk-in pantry, making meal preparation and entertaining a breeze. Connect with your family with a second adjoining living

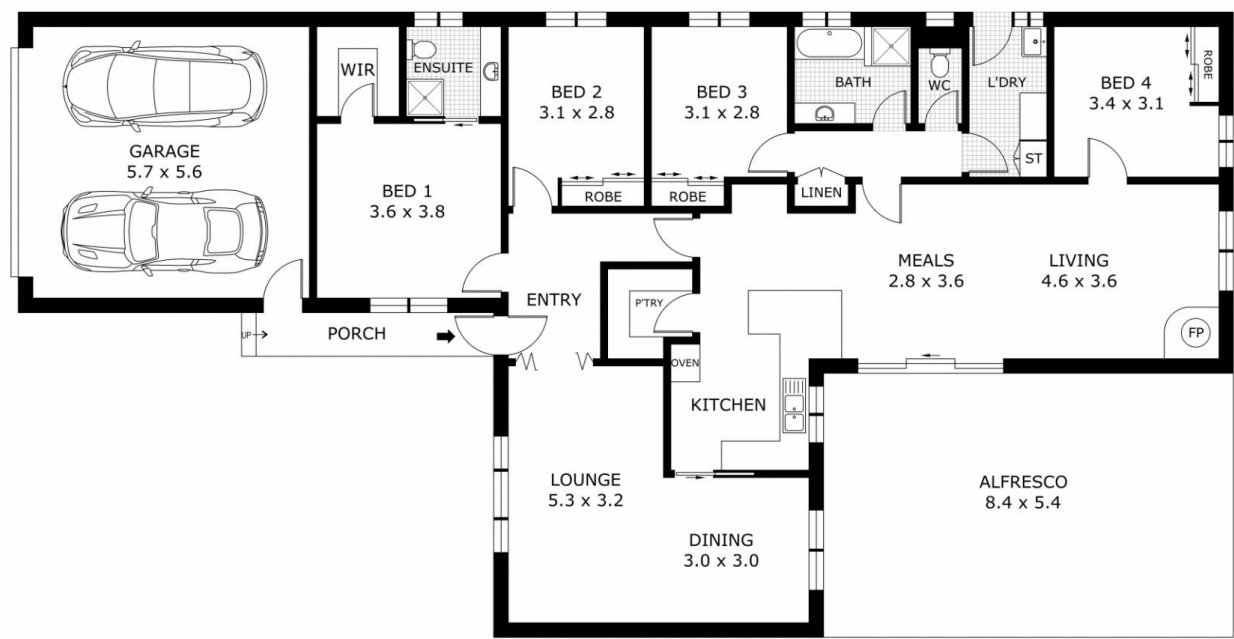
**Price** : \$ 690,000  
**Land Size** : 816 sqm  
**View** : <https://www.ypa.com.au/8073593>



**Lisa Totaro**  
0410 144 215



**Cassandra Doria**  
0497 972 028



Disclaimer: All images, views and diagrams are indicative only. Dimensions, areas and landscape are indicative and subject to change without notice. Purchasers should check the plans and specifications included in the terms of the contract of sale carefully prior to signing the contract.