



1/35 Priestley Avenue Hoppers Crossing VIC

3 2 1

This fantastic home is more like a house than a unit. Updated throughout this low-maintenance residence is North facing and ideally positioned in a prime location of Hoppers Crossing.

Boasting 3 decent sized bedrooms, master with ensuite, large front lounge area and open plan kitchen meal that flows out to landscaped gardens with synthetic lawn. Additional features include a gas heating, split system cooling, freshly painted and new stainless steel appliances.

Centrally located in the Mossfiel Estate you are within easy reach of Pacific Werribee Plaza, top schools and easy freeway access

Price : \$ 463,000
Land Size : 295 sqm
View : <https://www.ypa.com.au/8075224>

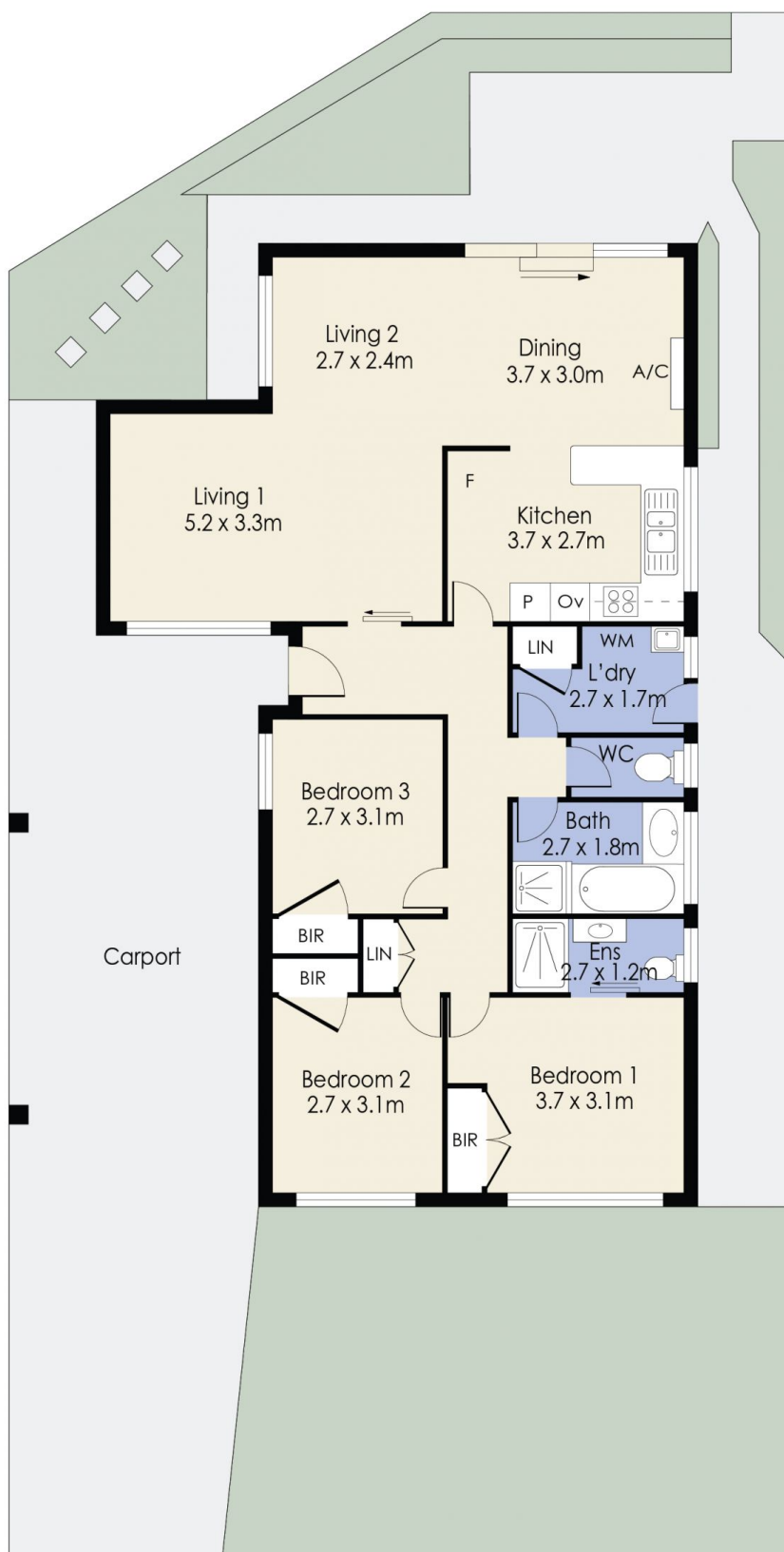


James Antonio
0401 889 248



Abdul Merabi
0424 263 506

1/35 Priestley Avenue, HOPPERS CROSSING



Whilst every attempt has been made to ensure the accuracy of the floor plan contained here, measurements of doors, windows, rooms and any other items are approximate and no responsibility is taken for any error, omission, or mis-statement. This plan is for illustrative purposes only and should be used as such by any prospective purchaser. The services, systems and appliances shown have not been tested and no guarantee as to their operability or efficiency can be given.