

15 Mark Street Rosebud VIC

2  1  2 

YPA Rye is proud to present this cute 2 bedroom weatherboard residence.

This property is Perfect for those who just need a short term Rental and is fully furnished for your ease.

Features:

- 2 Large Bedrooms with built in cabinetry
- Large Lounge Area
- Separate Dining Room
- Kitchen / Laundry
- Bathroom
- Large Yard

Land Size : 742 sqm

View : <https://www.ypa.com.au/8075579>



Jessica Trahar
0416 737 904

This property is fully furnished on a 6 MONTH LEASE,



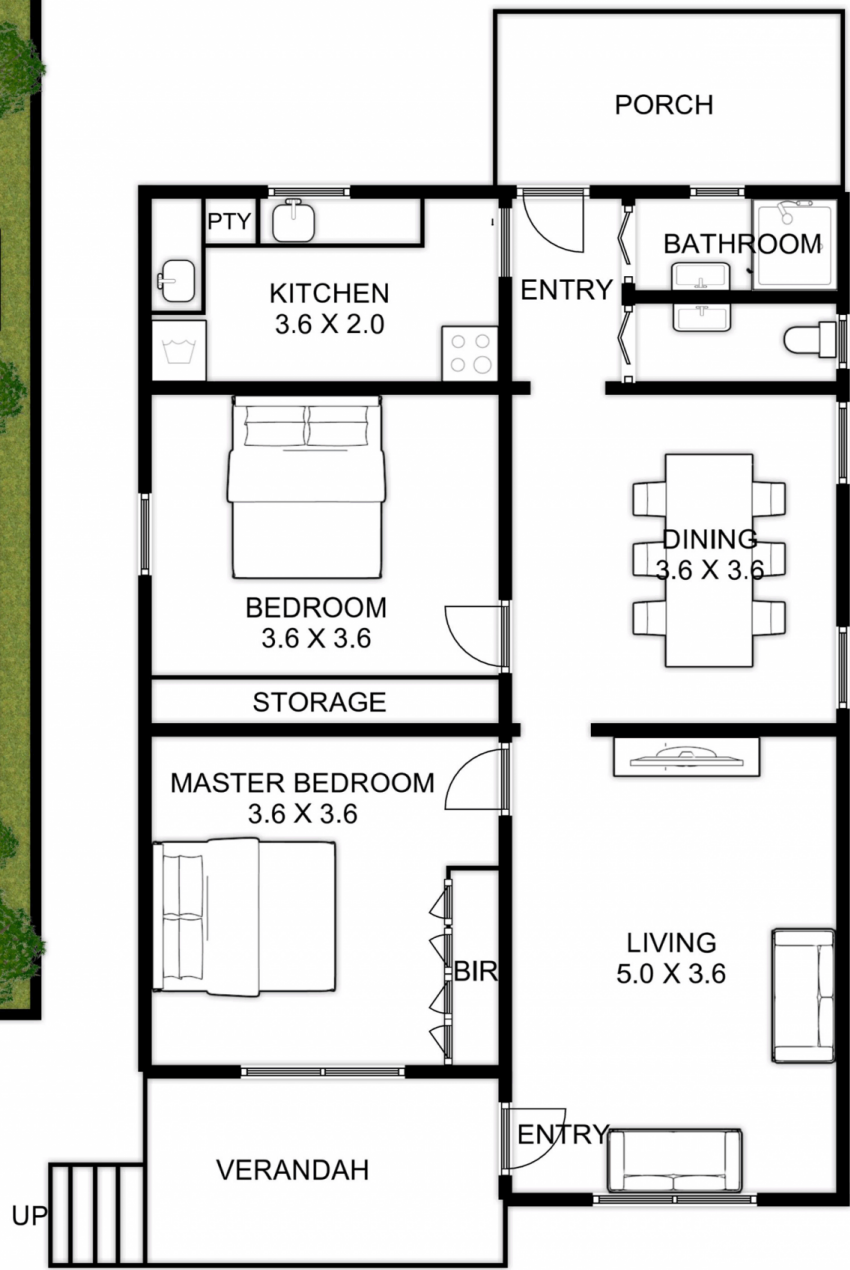
SITE

INTERNAL LIVING AREA
APPROX: 79.7 SQUARE METERS

VERANDA AND PORCH
APPROX: 14.9 SQUARE METERS

STUDIO
APPROX: 10.8 SQUARE METERS

TOTAL AREA
APPROX: 105.4 SQUARE METERS



RESIDENCE

15 MARK ST ROSEBUD

This is an artistic representation. All measurements, dimensions and illustrated areas are approximate. It is the responsibility of all interested parties to verify all data depicted and omitted.