



126 Brights Drive Rye VIC

3 2 2

Exuding an abundance of refined coastal character and timeless modern charm, this elevated weatherboard home showcases impeccably maintained interiors that promise an exceptional family lifestyle with indoor-outdoor fluidity. With its elevated tree-top aspects and low-maintenance convenience, the three-bedroom residence delivers an ideal setting for both holiday-makers and year-round family living.

Unfolding elegantly upon solid hardwood floors, a top-floor living experience celebrates nature's beauty with a flawless integration of indoor-outdoor entertaining space. Opening beyond a modern kitchen comprising quality oven and induction cooktop, Bosch dishwasher and island bench, living and dining space spills to a rear alfresco deck where an elevated vantage point captures views of the landscaped garden.

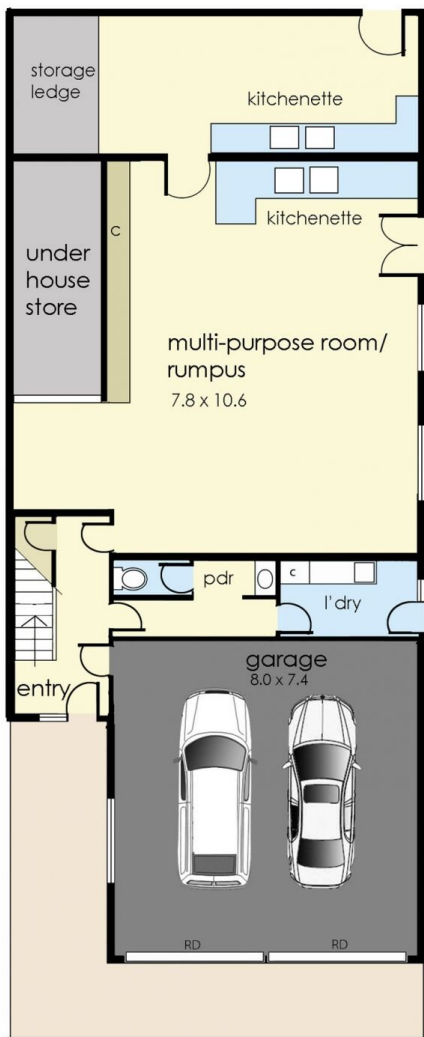
Price : \$1,150,000 - \$1,250,000
Land Size : 712 sqm
View : <https://www.ypa.com.au/8076385>



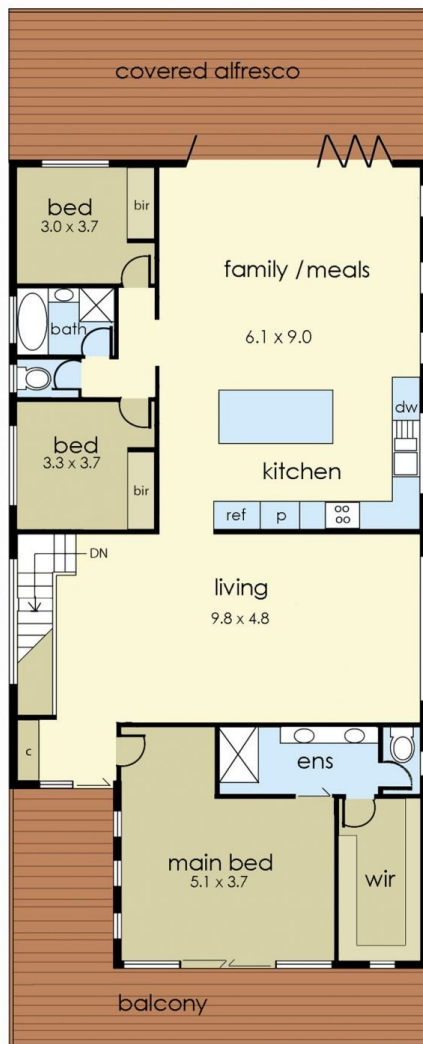
Ryan O'Connor
0422 564 474



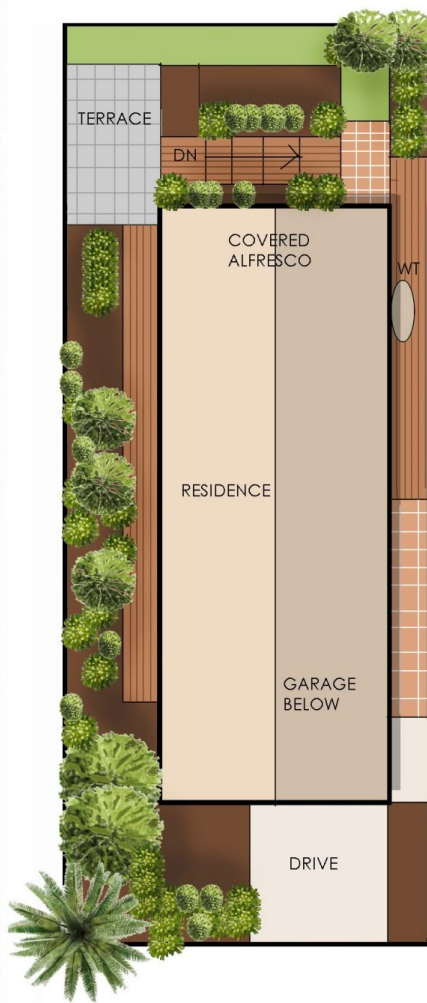
Pietra Vieira
0452 569 994



GROUND FLOOR



FIRST FLOOR



126 Brights Drive, Rye

© Produced by DND Floorplans

Floorplan is a "guide only" for marketing purposes, and not a working drawing. Dimensions are indicative only