



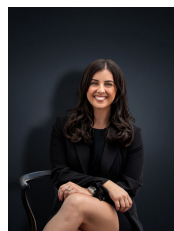
## 39 Clematis Crescent Manor Lakes VIC

3 2 2

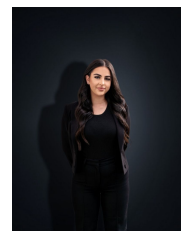
From the minute you arrive at this impeccable home it completely grabs your attention! With a point of difference in street appeal it automatically reels you in and it certainly doesn't stop there. The incredible interiors will surpass your imagination, even for the most fastidious of buyers. The location is an added advantage positioning you only a short distance to amenities including the Wyndham Vale train station (Approx. 1.2km), Manor Lakes Shopping Centre (Approx. 2.8km), Reputable schools, parks & walking tracks. Internally, the homes premium upgraded fixtures and fittings will ensure effortless future living, including;

- ? High ceilings throughout the entire home
- ? Timber floorboards & sandstone tiles throughout the main living zones
- ? Formal lounge upon entry with access to the secluded

**Price** : \$ 720,000  
**Land Size** : 512 sqm  
**View** : <https://www.ypa.com.au/8077496>



**Kirsty Cunningham**  
0414 344 475



**Stefanie Zahra**  
0406 871 722

# 39 Clematis Crescent, Manor Lakes



Whilst every attempt has been made to ensure the accuracy of the floor plan contained here, measurements of doors, windows, rooms and any other items are approximate and no responsibility is taken for any error, omission, or mis-statement. This plan is for illustrative purposes only and should be used as such by any prospective purchaser. The services, systems and appliances shown have not been tested and no guarantee as to their operability or efficiency can be given.