



## 43 Stagecoach Crescent Sydenham VIC

3 1 2

This beautifully presented and maintained home encapsulates the perfect blend of comfort, versatility and convenience, providing a perfect family home. Upon entry you are welcomed to a large formal lounge featuring a bar, an area that you can enjoy with friends or quiet evenings with loved ones. Flowing on into the ample sized renovated kitchen finished with stone benchtops, perfect for all your culinary needs adjoining the meals and second living area highlighted by expansive cathedral ceilings. Offering three fitted bedrooms, a master with walk in robe all serviced by a central bathroom there is plenty of space for all the family.

For those who like to entertain step outdoors to the beautiful courtyard, flowing on from the kitchen this provides the perfect area for hosting barbecues, gatherings or to enjoy fine dining with family and friends.

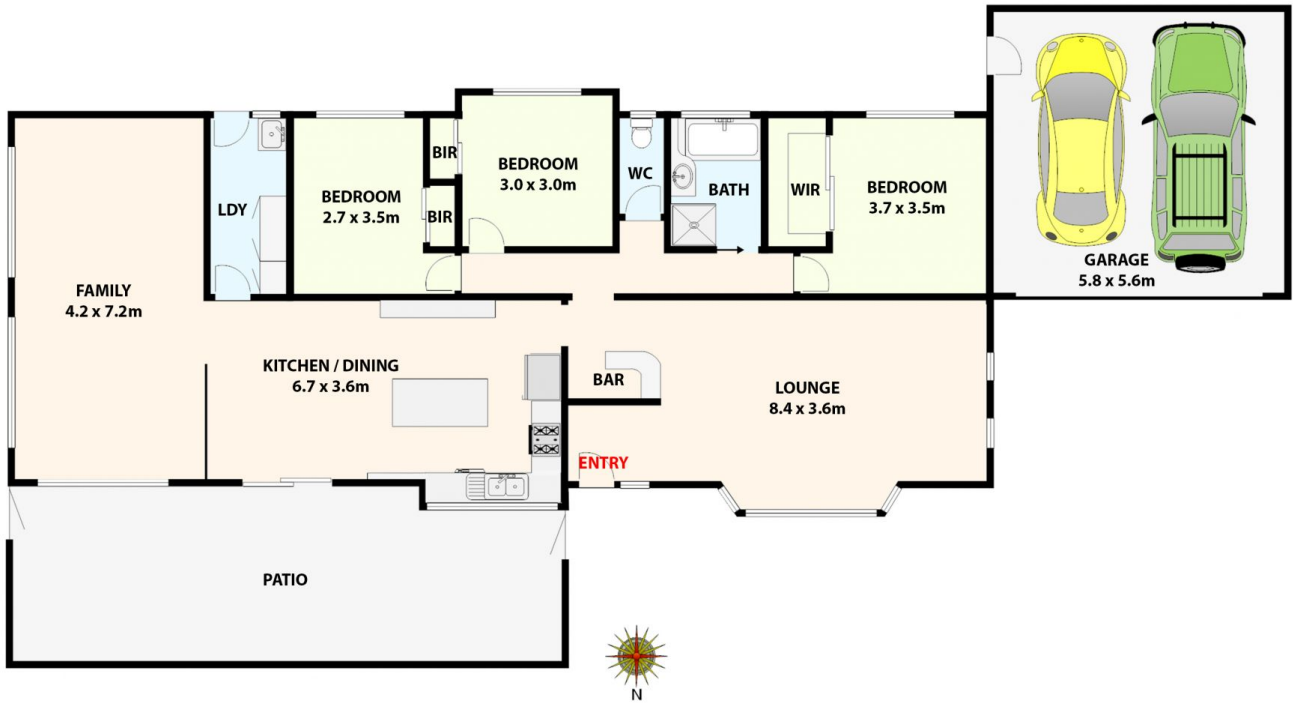
**Price** : \$ 738,000  
**Land Size** : 850 sqm  
**View** : <https://www.ypa.com.au/8078777>



**Gavin Fouts**  
0401 178 636



**Nancy Crupi**  
0413 969 284



**43 Stagecoach Crescent, Sydenham.**

*All data and dimensions shown in this sketch are approximate.*