

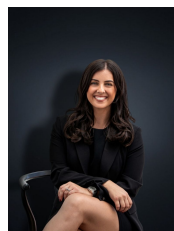
21/156-158 Bethany Road Hoppers Crossing VIC

2 **1** **1**

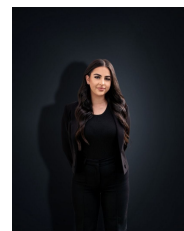
Immaculately presented, this updated home is sure to impress all buyers looking to secure their first home or investors looking at adding to their portfolio! Situated in a great family friendly pocket of Hoppers Crossing you are positioned minutes to so many amenities including; The Grange P-12 College, Early learning Centres, Hogans Corner Shopping Centre, local shops, Parklands & Pacific Werribee! With location being a premium, the home also offers:

- ? Two spacious bedrooms with built in robes
- ? Central two way bathroom with separate toilet
- ? Open plan kitchen, meals and family living arrangement with quality appliances
- ? Study space
- ? Single car garage with internal access
- ? Low maintenance gardens both front and back

Price : \$ 440,000
Land Size : 277 sqm
View : <https://www.ypa.com.au/8079522>



Kirsty Cunningham
0414 344 475



Stefanie Zahra
0406 871 722

21/256 Bethany Road, HOPPERS CROSSING



Whilst every attempt has been made to ensure the accuracy of the floor plan contained here, measurements of doors, windows, rooms and any other items are approximate and no responsibility is taken for any error, omission, or mis-statement. This plan is for illustrative purposes only and should be used as such by any prospective purchaser. The services, systems and appliances shown have not been tested and no guarantee as to their operability or efficiency can be given.