



## 82-84 Eumeralla Grove Mount Eliza VIC

4 2 2

Nestled in a prestigious neighbourhood, this home boasts wide country views and an affluent lifestyle. Surrounded by luxury homes with meticulously maintained parklike gardens on small acreage blocks, this property offers serene elegance and privacy. Close to the prestigious Mt Eliza Schools and all local amenities, this property provides for refined living and convenience.

Featuring:

- ? Stunning Country views across the Moorooduc Plains
- ? Spacious residence, privately tucked away in a secluded location
- ? Functional floor plan with multiple living zones catering for everybody

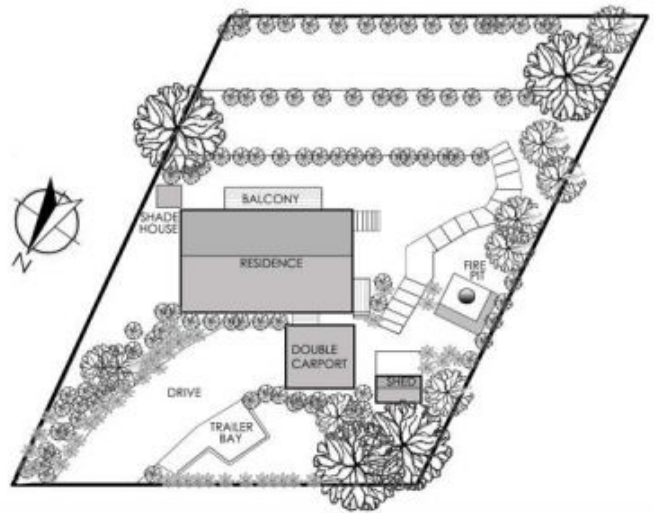
**Price** : \$ 1,225,000  
**Land Size** : 1449 sqm  
**View** : <https://www.ypa.com.au/8079602>



**Elke Remscheid**  
0423 211 315



**Will Lilkendey**  
0448 785 744



Internal living area  
approx: 22 squares

Porch, verandah,  
alfresco and balcony  
approx: 8 squares

Total area  
approx: 30 squares

Land area  
approx: 1449 sqm

Original build  
2014

## 82 -84 Eumeralla Grove, Mount Eliza

© Produced by DND Floorplans

Floorplan is a "guide only" for marketing purposes, and not a working drawing. Dimensions are indicative only