



## 4 Hillview Street Dromana VIC

4 2 2

This solidly built brick home is situated in a quiet non-drive thru court location with direct walking access to the Hillview Community Reserve with its BBQ facilities, the leash free area, the lake, access to the State Park Hiking & BMX tracks as well as the Boundary Road Coffee- and Speciality shops across the road from there.

### Featuring:

? Amazing bay views during the day, spectacular lights at night

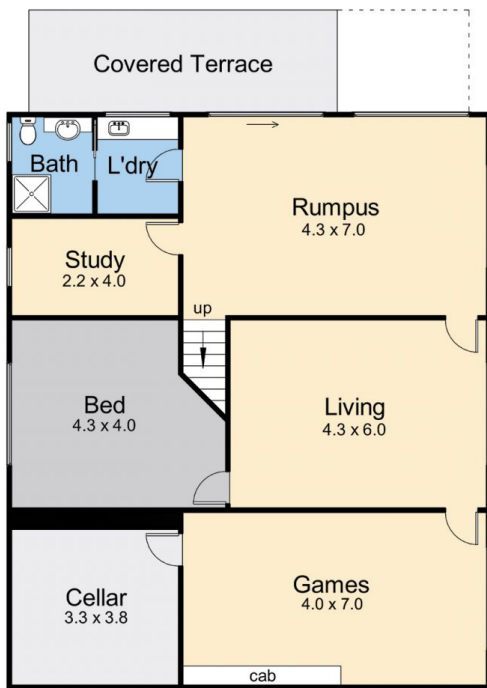
? Four generous bedrooms PLUS study / home office

? Numerous living areas on both levels catering for everyone in the family, great separate areas for games and/or relaxation

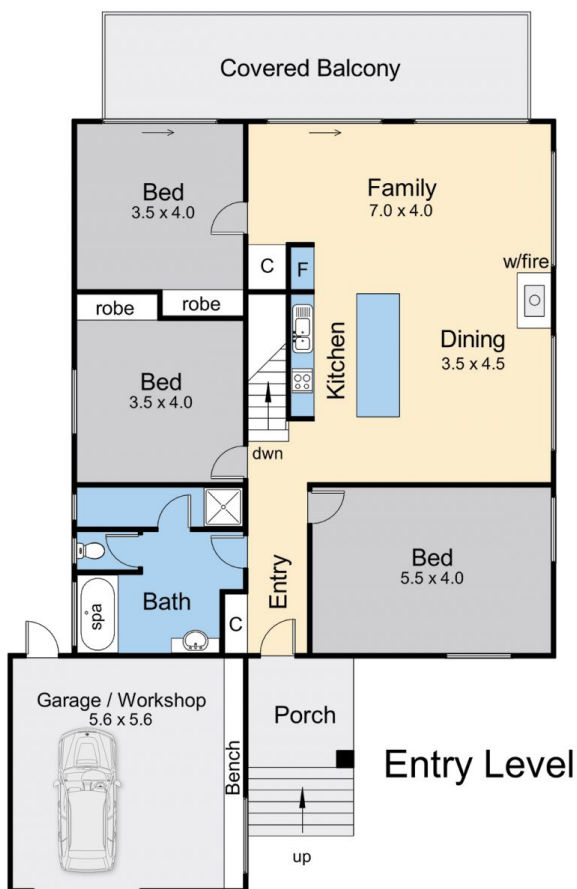
**Price** : \$ 1,190,000  
**Land Size** : 567 sqm  
**View** : <https://www.ypa.com.au/8080049>



**Elke Remscheid**  
 0423 211 315

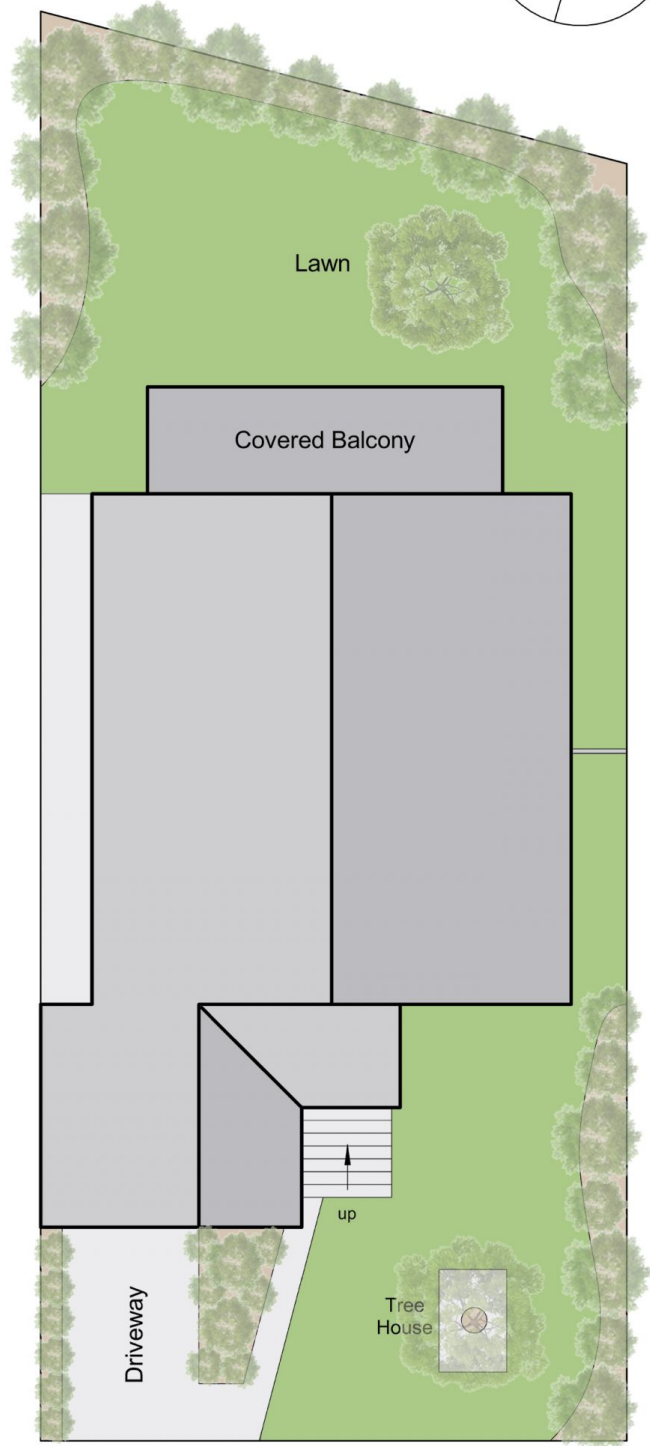
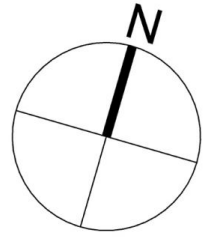


Lower Floor



Entry Level

Internal area = 30.2 squares (approx)  
 Garage area = 3.8 squares (approx)  
 External area = 5.4 squares (approx)  
 Total area = 39.4 squares (approx)



Site Plan

## 4 Hillview Street, Dromana

This floorplan is for illustration purposes only and no warranty is given to its accuracy. Purchasers are advised to carry out their own investigations. Produced by **realitywriters** (03) 5970 2222