



## 15 Thomasz Place KURUNJANG VIC

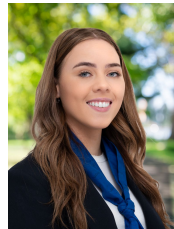
3 1 1

Situated in the heart of Kurunjang, on a generous 559 m<sup>2</sup> (approx.) block, this home is conveniently positioned close by to everything that Kurunjang has to offer, including schooling of all levels, parklands, walking tracks, milk bar and easy access to the Western Freeway.

**Price** : \$489,000 - \$529,000

**View** : <https://www.ypa.com.au/8081313>

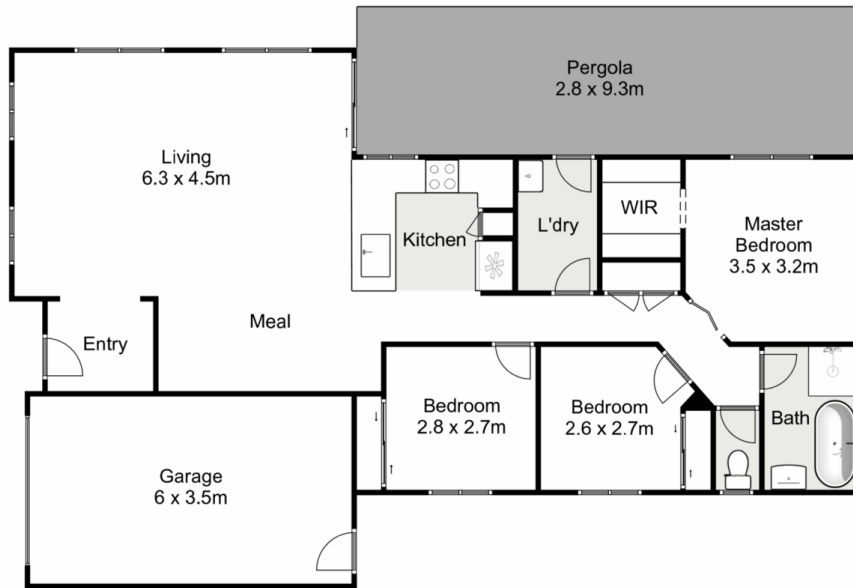
Stepping into the heart of the home, you'll immediately notice the spacious lounge and meals area, designed to comfortably accommodate the entire family. This welcome space is enhanced by large windows that flood the room with natural light, alongside a reverse cycle split system and ducted heating that continues through the home, ensuring comfort in all seasons. Overlooking this area is a well-appointed kitchen, boasting ample bench and cupboard space, stone bench top with subway tile splash back, dishwasher, and a dishwasher making it a delight for any home chef.



**Tahlia Hall**  
0422 419 589



**Ryan Anders**  
0434 900 300



## 15 Thomasz Place, Kurunjang

YPA

Whilst every attempt has been made to ensure the accuracy of the floor plan contained here, measurements of doors, windows, rooms and any other items are approximate and no responsibility is taken for any error, omission, or mis-statement. This plan is for illustrative purposes only and should be used as such by any prospective purchaser. The services, systems and appliances shown have not been tested and no guarantee as to their operability or efficiency can be given.

