



## 24 Wilkinson Court ROXBURGH PARK VIC

4 2 2

In a popular and convenient Roxburgh Park neighborhood, this single-level home is sure to make an immediate impression with its adaptable design, excellent position and terrific outdoors to enjoy. Beyond its distinctive façade, discover a light filled interior. Comprising 4 bedrooms master with walk in robe and ensuites. The other 2 bedrooms with built in robes are both serviced by a neat central bathroom and full-size laundry. open dining area and adjoining kitchen complete with breakfast bar, gas cooktop and modern oven. The living areas are designed with functionality and comfort in mind. The open-plan layout seamlessly connects the living, dining, and kitchen areas, creating an inviting space for relaxation and entertainment.

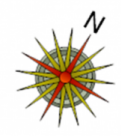
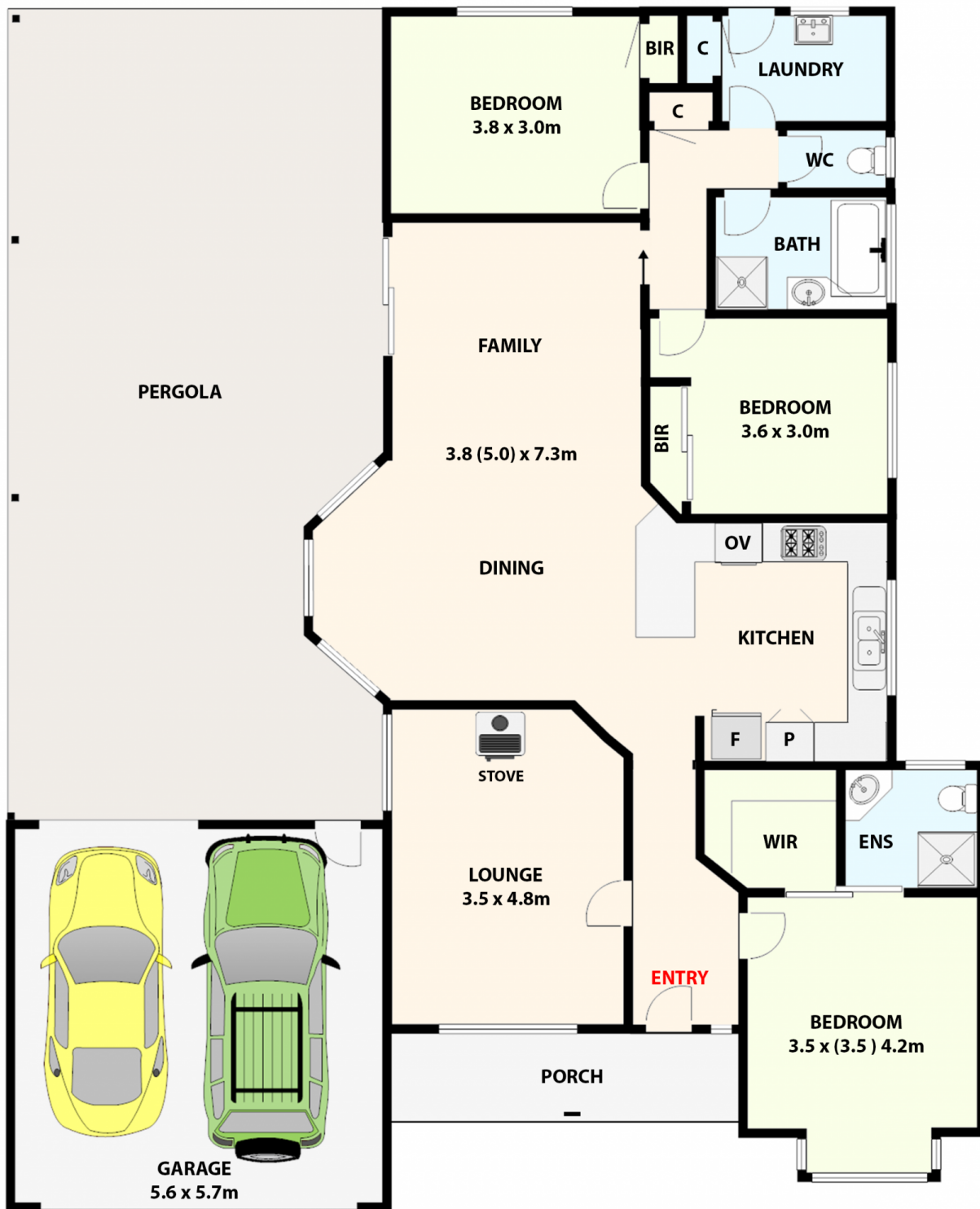
**Price** : Contact Agent  
**View** : <https://www.ypa.com.au/8082729>



**Virginia Haroun**  
0413 432 165

Additional features :

? Large entertaining area



**24 Wilkinson Street, Roxburgh Park.**  
*All data and dimensions shown in this sketch are approximate.*