



## 22 Church Street Melton VIC

5 🛏 1 🚿 2 🚗

Positioned on a huge 960m<sup>2</sup> (aprox.) allotment and superbly located in central Melton across the road from St Dominic's Primary School and with walking distance to Melton Primary School, Heathdale Christian College, Kurunjang Secondary College and Melton High Street Shopping District.

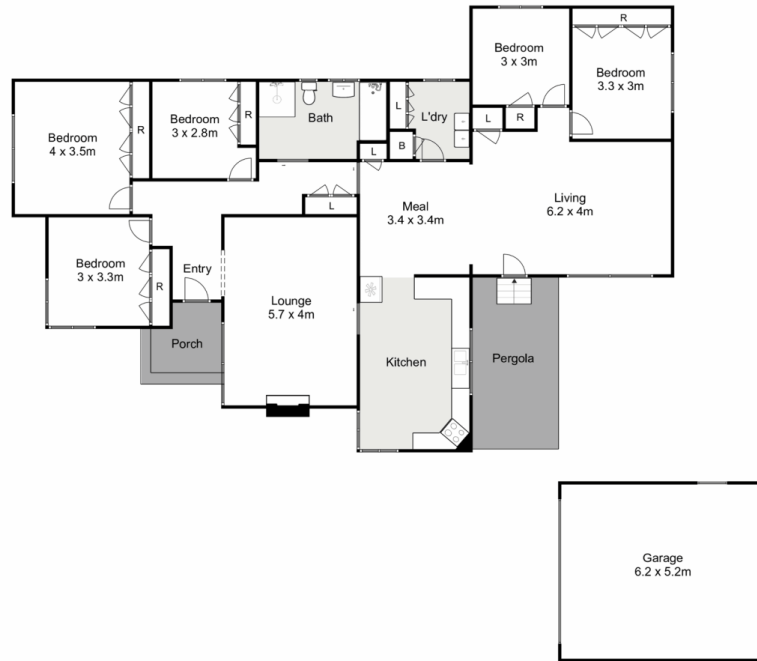
Walking into this quality built home you are greeted with soaring ceilings trimmed with decorative cornicing and a wide open entry leading off into the large formal lounge room and into the spacious kitchen area.

Overseen by the kitchen is the open meals area and huge rumpus room at the rear of the home. This home further comprises of five large bedrooms with built in robes that are serviced by a bright central bathroom.

**Price** : \$640,000 - \$680,000  
**Land Size** : 960 sqm  
**View** : <https://www.ypa.com.au/8083452>



**Mark Edwards**  
0422 017 068



## 22 Church Street, Melton

YPA

Whilst every attempt has been made to ensure the accuracy of the floor plan contained here, measurements of doors, windows, rooms and any other items are approximate and no responsibility is taken for any error, omission, or mis-statement. This plan is for illustrative purposes only and should be used as such by any prospective purchaser. The services, systems and appliances shown have not been tested and no guarantee as to their operability or efficiency can be given.

