



6 Overland Chase Werribee VIC

4  2  2 

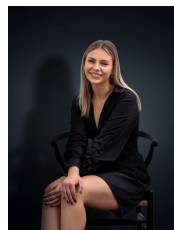
This spacious 4-bedroom home is situated in the sought-after Harpley estate, boasting with natural light and clever floor plan this home is sure to suit the fussiest of buyers.

The property itself has a warm and homely feel as you enter through the large front door and fall in love with the design, the large master bedroom opens to a WIR & ensuite and following through to the open-plan style lounge following to the kitchen, meals and dining with the laundry wrapping through the walk-in-pantry. The hallway comprises 3 additional bedrooms with BIR's and a central bathroom dividing them.

The black yard is composed of grass and concrete making up a low maintenance space perfect for those who might not be best on the grooming

Price : \$ 635,000

View : <https://www.ypa.com.au/8085138>



Kiarah Bagnato
0449 941 895



Mitch Smit
0450 913 513

6 Overland Chase, WERRIBEE



Whilst every attempt has been made to ensure the accuracy of the floor plan contained here, measurements of doors, windows, rooms and any other items are approximate and no responsibility is taken for any error, omission, or mis-statement. This plan is for illustrative purposes only and should be used as such by any prospective purchaser. The services, systems and appliances shown have not been tested and no guarantee as to their operability or efficiency can be given.