



6 Daintree Retreat Caroline Springs VIC

3 2 2

This single-level showpiece will be at the top of your wish list! Behind an appealing facade and situated in a great location, this fully optioned and flawlessly presented home hits all the high notes for you and your growing family! Built to last a lifetime there is something for a family of all ages to enjoy, you will fall in love with its expansive floorplan, premium features throughout, multiple living zones and fabulous indoor and outdoor entertaining spaces!

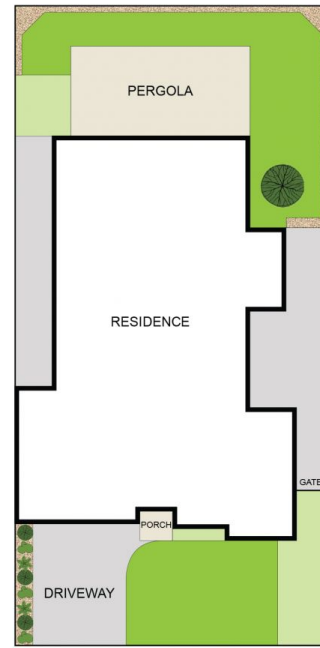
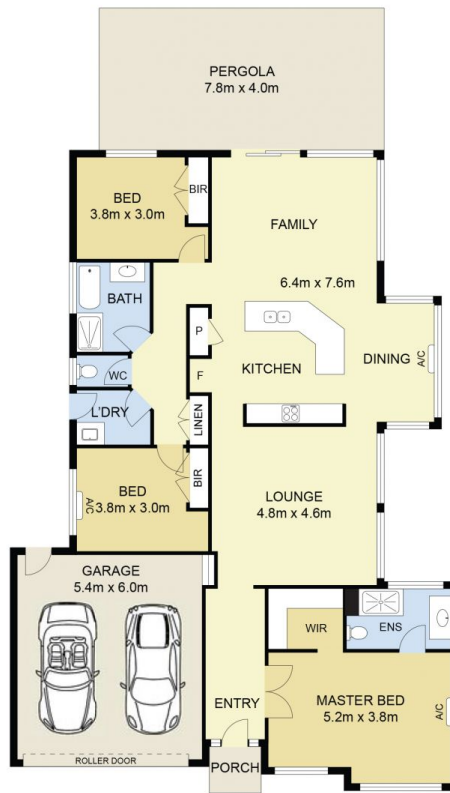
Features Include:

- ? Master bedroom showcasing a walk-in wardrobe and ensuite with quality fittings
- ? Additional two spacious bedrooms with built-in wardrobes (one with study nook)
- ? Separate lounge
- ? Open plan kitchen is located perfectly to incorporate the meals and living space

Price : \$ 765,000
Land Size : 512 sqm
View : <https://www.ypa.com.au/8086047>



Stephen Azzopardi
 0402 012 554



SITE PLAN
(NOT TO SCALE)



6 Daintree Retreat, Caroline Springs

DISCLAIMER : ALL DIMENSIONS ARE AN APPROXIMATION ONLY AND NO GUARANTEE IS GIVEN WITH RESPECT TO ACCURACY.