



15 Glendye Court Corio VIC

3  1  3 

Nestled within the sought-after Cloverdale Estate, this impeccable residence offers a blend of modern elegance and timeless appeal.

Discover a beautiful kitchen adorned with sleek finishes and overlooking the sunlit north-facing backyard. Outside, a covered entertainment area complements a generous backyard, accompanied by a double carport and large garage.

Updated with both style and functionality in mind, the bathroom and laundry ensure convenience. This tranquil abode rests in a serene court close to Corio Shopping Centre, schools, transport, and the Ring Road.

Positioned in Corio's prime locale, this smartly-designed home promises an ideal lifestyle.

Price : \$ 530,000

Land Size : 562 sqm

View : <https://www.ypa.com.au/8088104>

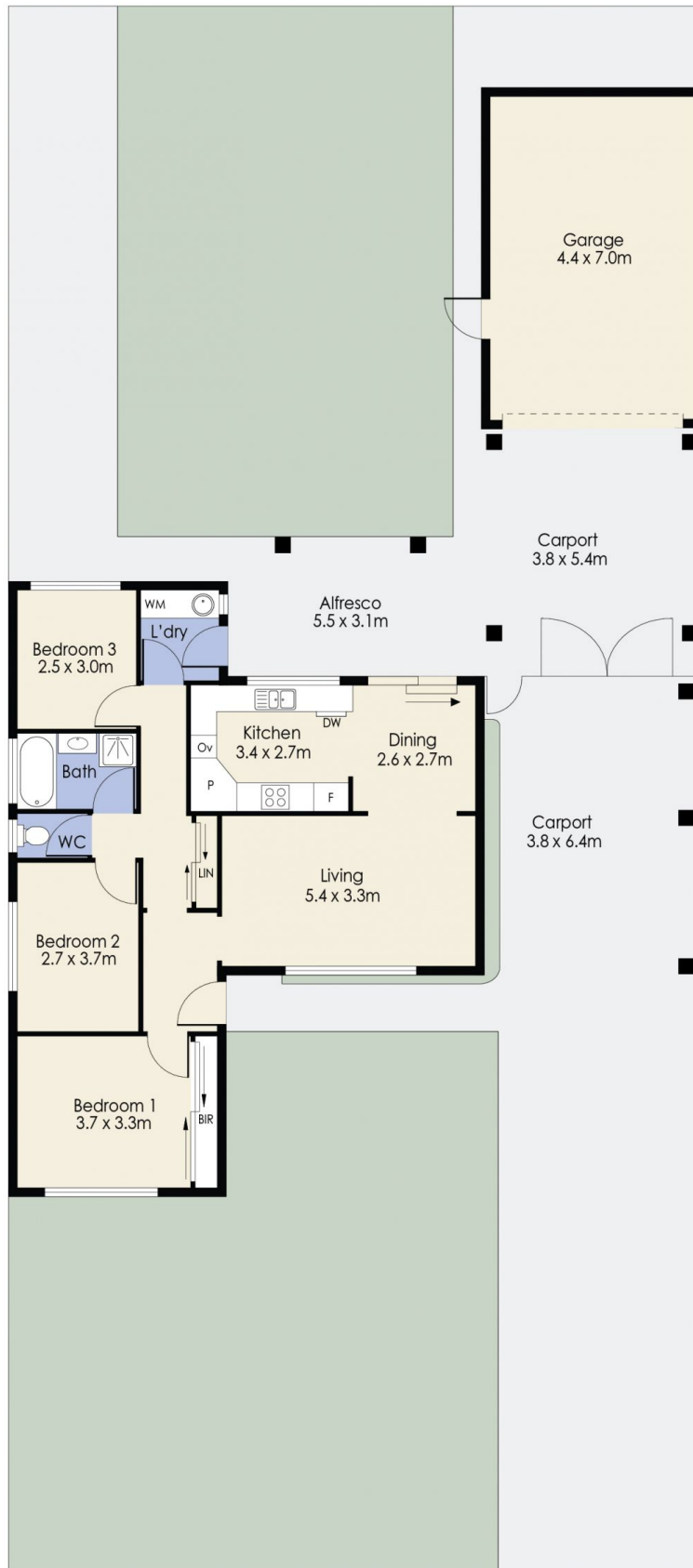


James Antonio
0401 889 248



Dane Bouch
0499 655 382

15 Glendye Court, Corio



Whilst every attempt has been made to ensure the accuracy of the floor plan contained here, measurements of doors, windows, rooms and any other items are approximate and no responsibility is taken for any error, omission, or mis-statement. This plan is for illustrative purposes only and should be used as such by any prospective purchaser. The services, systems and appliances shown have not been tested and no guarantee as to their operability or efficiency can be given.