

37 Talbot Grove McCrae VIC

3 2 1

Nestled among the leafy gumtrees of McCrae, this quality family home ticks all the boxes for a convenient & peaceful outdoors lifestyle.

Positioned on a low maintenance corner allotment, this well designed home features generous off-street parking, an abundance of natural light and a view of Arthurs Seat from the second level.

Enjoy a design for comfort & simplicity, featuring stone benchtops, high ceilings, a remote lockup garage with access to the rear courtyard, a concrete bay for a 2nd car, van or boat, split system heating/cooling, gas ducted heating, and a ground level master bedroom with its own private deck, ensuite & walk in wardrobe. The wrap around decking and yard are fully secure to allowing you to let pets and kids play freely with a view from the kitchen and living

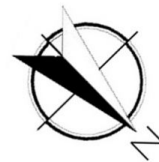
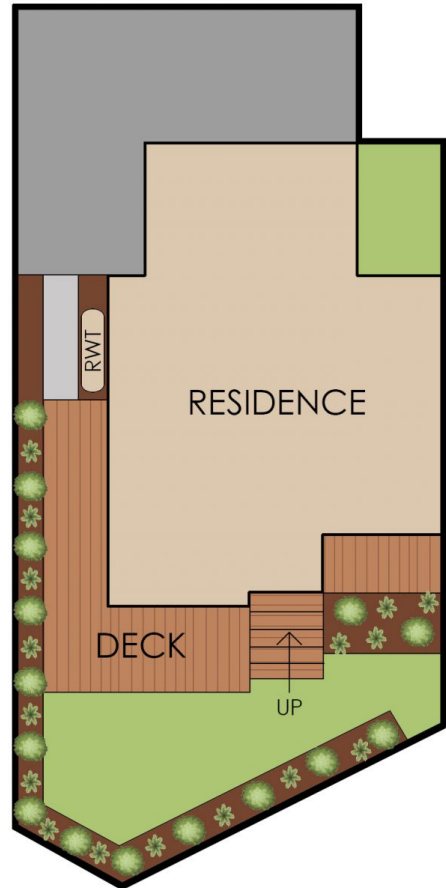
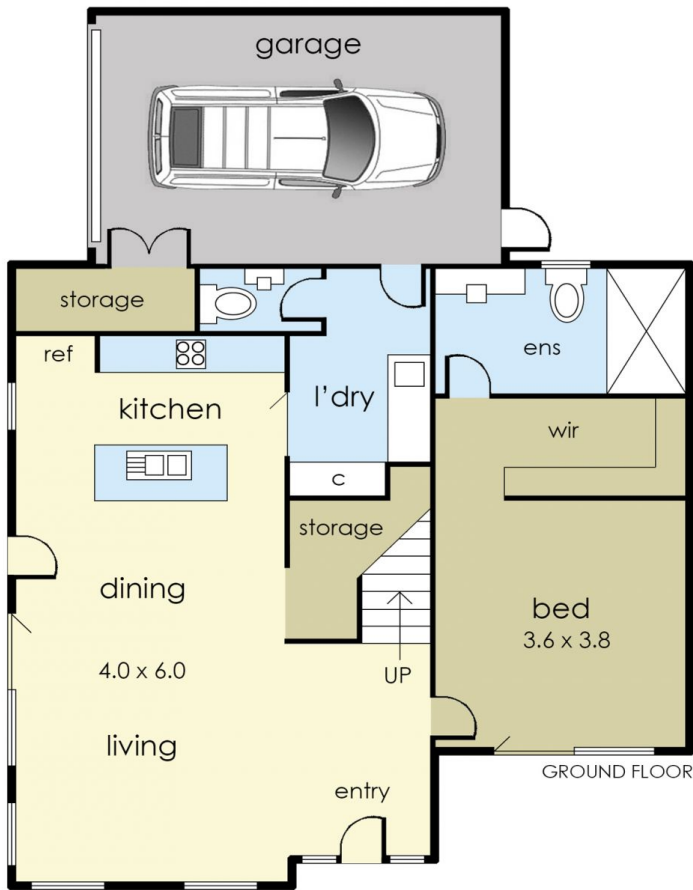
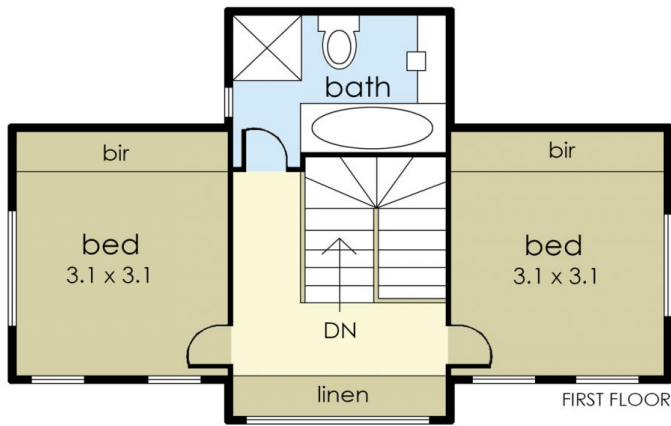
Price : \$750,000 - \$795,000
Land Size : 290 sqm
View : <https://www.ypa.com.au/8088345>



Ryan O'Connor
0422 564 474



Pietra Vieira
0452 569 994



37 Talbot Grove, McCrae

© Produced by DND Floor Plans

This floorplan is for illustration purposes only and no warranty is given to its accuracy. Purchasers are advised to carry out their own investigations.