



19 Palmerston Avenue Dromana VIC

3 2 2

Surrounded by high fences for a lifestyle of complete privacy and unrivalled security, showcasing a captivating blend of artistry and elegance, this beautifully presented residence carries an ambience of warmth throughout its unique single-level layout. Picture-perfect with its high front fence, established gardens and side entryway, a peaceful beachside lifestyle awaits moments from the Boundary Road shops, Dromana Primary School and Dromana Beach.

Reconfigured to provide a sun-drenched unity across the social domain, a central kitchen with expansive stone island and walk-in pantry cleverly blends a large dining space with a dedicated lounge where large windows capture a resort-style garden outlook. A sliding glass door takes social gatherings outside, where a rear flat block with raised veggie gardens offers a secure space for children to

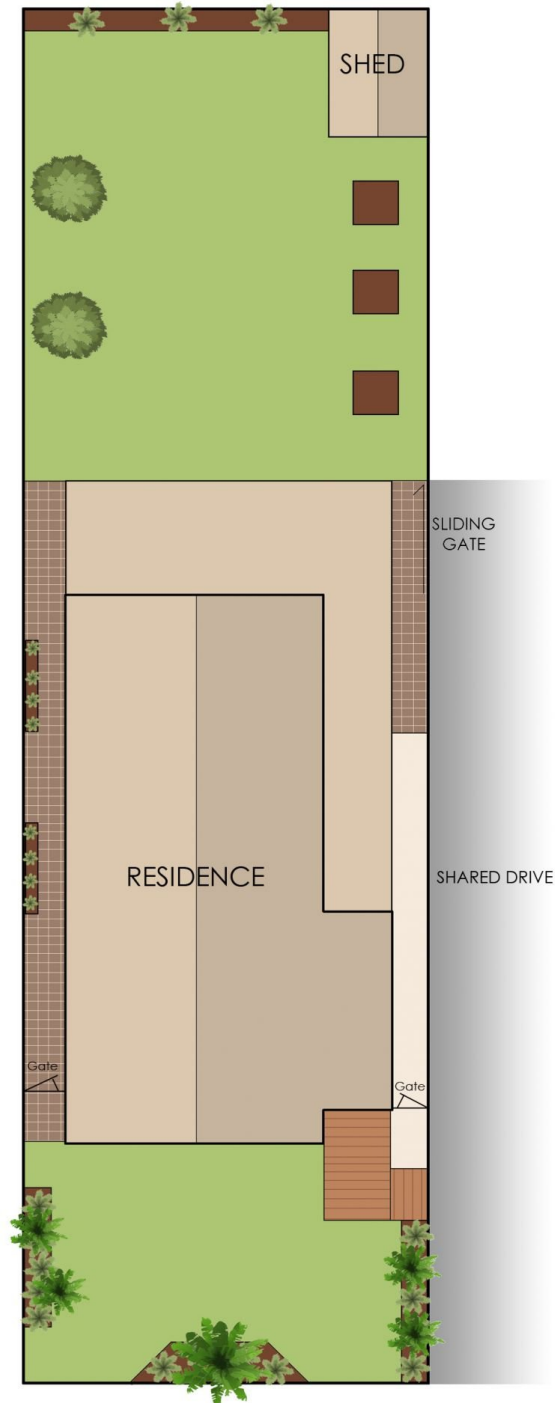
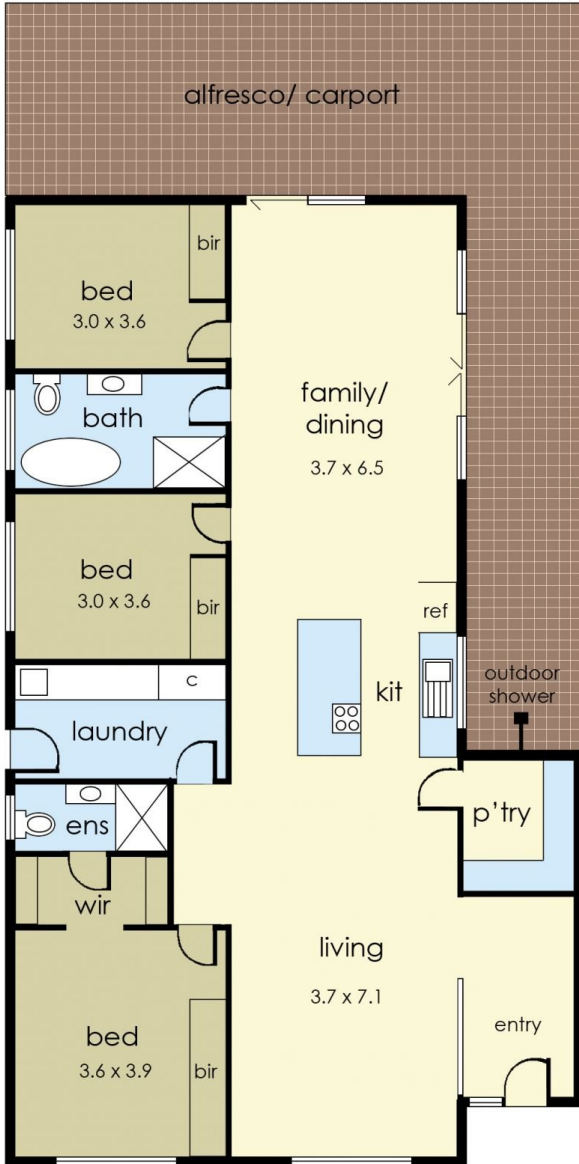
Price : \$795,000 - \$870,000
Land Size : 440 sqm
View : <https://www.ypa.com.au/8088922>



Ryan O'Connor
 0422 564 474



Pietra Vieira
 0452 569 994



19 Palmerston Avenue, Dromana

© Produced by DND Floor Plans

This floorplan is for illustration purposes only and no warranty is given to its accuracy. Purchasers are advised to carry out their own investigations.