

8 Geoffrey Terrace Tarneit VIC

4 2 2

Welcome to Your Dream Home!

Discover the perfect blend of luxury and convenience at 8 Geoffrey Terrace, Tarneit. With spacious interiors, modern amenities, and a prime location, this property is designed to meet all your lifestyle needs.

Features:

- ? Massive master bedroom with ensuite and walk-in robe
- ? 2 living areas
- ? Separate study
- ? Open plan kitchen/meals & family area
- ? Fully covered alfresco area
- ? Ducted heating and evaporative cooling
- ? Low maintenance backyard
- ? Security system with alarm and cameras

Price : \$700,000 - \$770,000
Land Size : 543 sqm
View : <https://www.ypa.com.au/8089859>

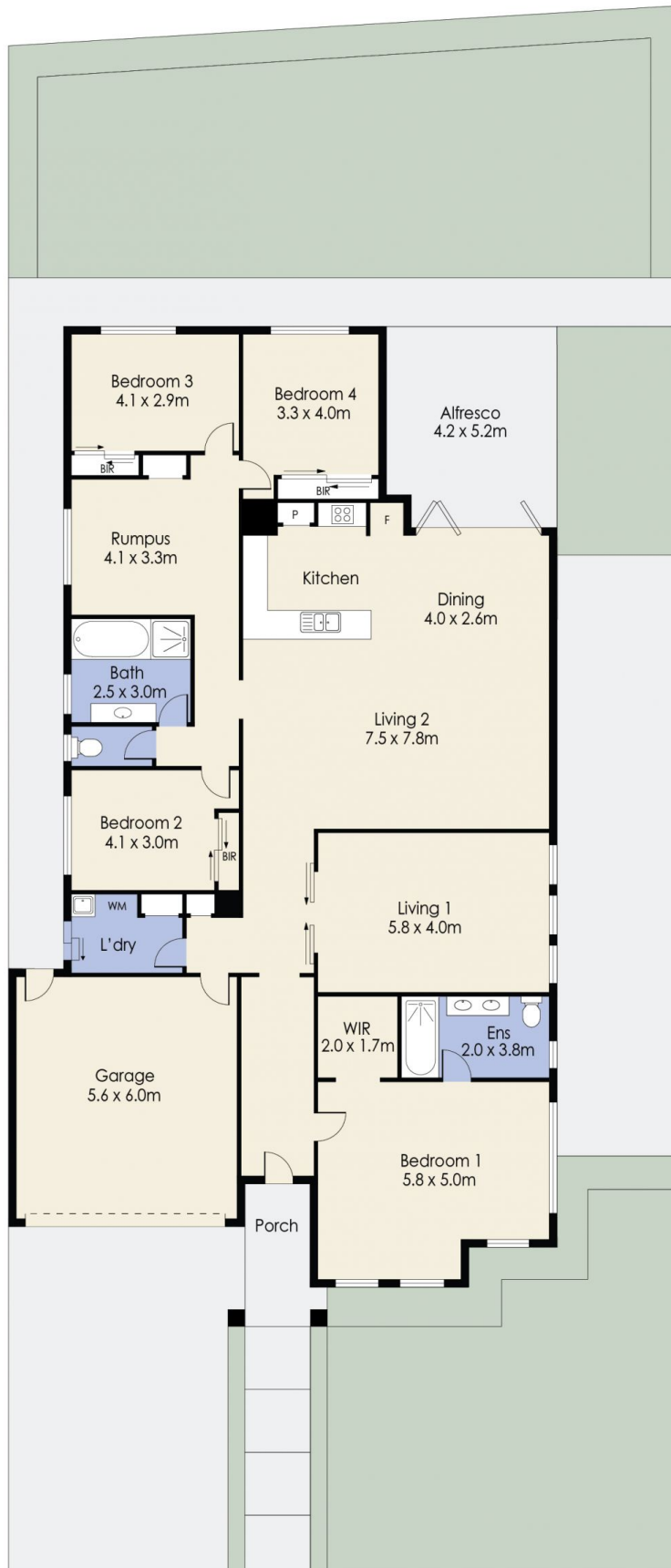


Danish Natha
0405 857 895



Mitch Smit
0450 913 513

8 Geoffrey Terrace, TARNEIT



Whilst every attempt has been made to ensure the accuracy of the floor plan contained here, measurements of doors, windows, rooms and any other items are approximate and no responsibility is taken for any error, omission, or mis-statement. This plan is for illustrative purposes only and should be used as such by any prospective purchaser. The services, systems and appliances shown have not been tested and no guarantee as to their operability or efficiency can be given.