



## 4 The Helm Capel Sound VIC

3 2 2

A fantastic low-maintenance coastal home nestled in a tranquil court just 450\*m to the beach! - welcome to 4 The Helm.

**Price** : \$ 675,000

**View** : <https://www.ypa.com.au/8091809>

Designed for comfortable living and enjoying an easy care level allotment and an ultra convenient location, this wonderful property offers single level construction and a traditional floor plan comprising of three bedrooms, two bathrooms, a bright open plan kitchen, living and dining, plus a secure single carport complete with an electric roller door.

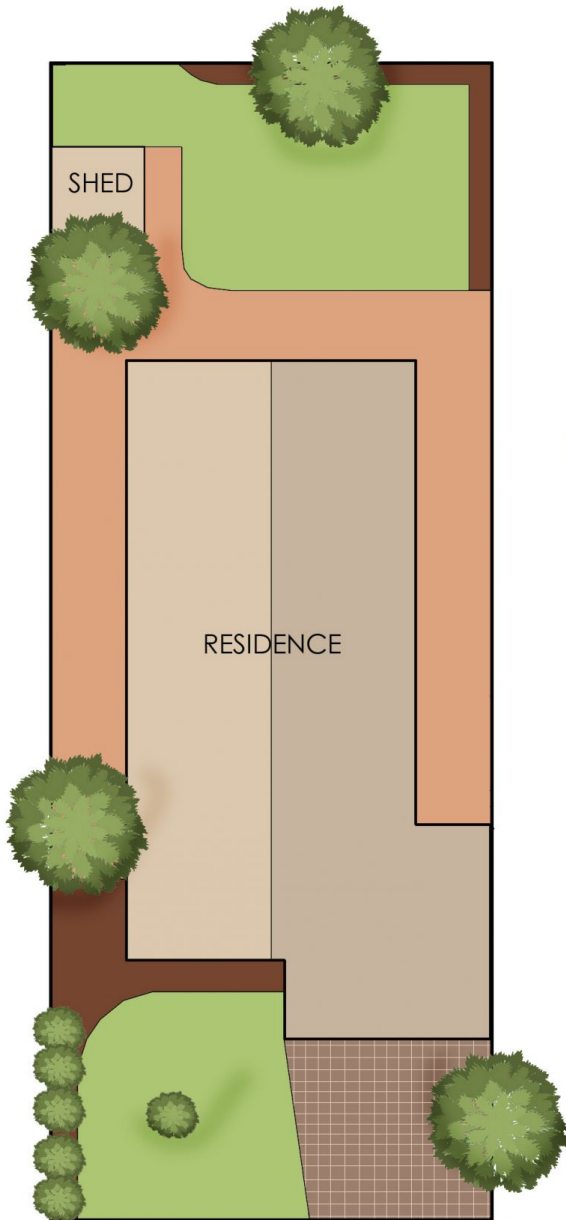


**Jade Springer**  
0437 410 791



**Kelsie Janssen**  
0417 245 204

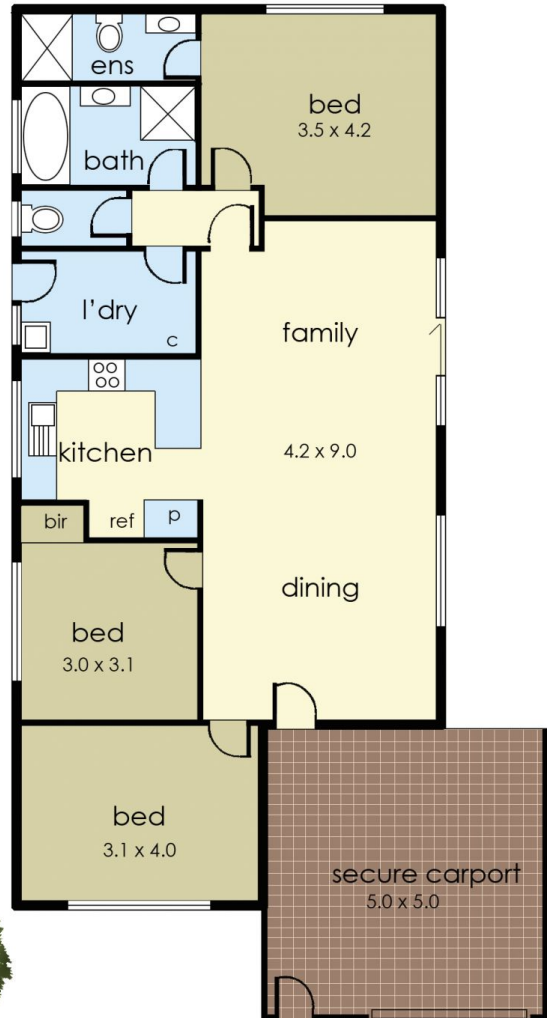
Situated just moments from the Capel Sound Foreshore and Bay Trail, The Helm combines relaxed coastal living with practical features - perfect for those seeking a serene retreat with easy access to Rosebud Plaza, Rye Village and the Mornington Peninsula Freeway.



Internal living area  
approx: 12 squares

Carport area  
approx: 2.5 squares

Total area  
approx: 14.5 squares



## 4 The Helm, Capel Sound

© Produced by DND Floor Plans

This floorplan is for illustration purposes only and no warranty is given to its accuracy. Purchasers are advised to carry out their own investigations.