

## 18 Kangerong Avenue Dromana VIC

5 3 1

BRICK HOME with TWO Bedroom BUNGALOW at rear, perfectly set on a large block of approx. 859m<sup>2</sup>.

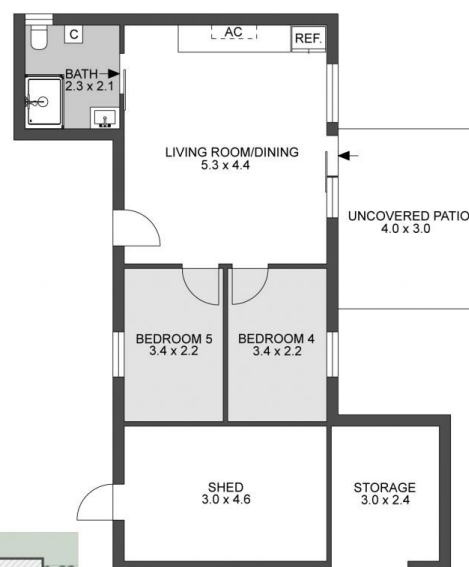
### OPTIONS:

1. Two very liveable & rentable homes
2. Renovate one or both homes and add to the value
3. Keep as one block or subdivide with battleaxe at the rear STCA
4. Keep one home, sell or rent the other
5. Rebuild one or both homes STCA
6. Extend or build double storey STCA

**Price** : \$1,095,000 - \$1,195,000  
**Land Size** : 859 sqm  
**View** : <https://www.ypa.com.au/8097069>



**Elke Remscheid**  
 0423 211 315



SEP.CONTAINED STUDIO



## SITE PLAN



The site plan and floor plan are not to scale; measurements are indicative and in metres. Bushes and trees are placed for illustration purposes. Plans should not be relied on. Interested parties should make and rely on their own enquiries.