

11 Surveyor Street Wyndham Vale VIC

4 2 2

A residence that effortlessly exudes warmth and character. Situated on a spacious block, this home is designed with open-plan living in mind, offering a perfect blend of style, functionality, and comfort. The expansive layout includes 4 large bedrooms, with the main bedroom featuring a walk-in robe and en suite, plus a separate study that provides an ideal space for work or quiet reflection.

The heart of the home is its open-plan living area, where a well-appointed kitchen complete with stainless steel appliances, stone benches, and ample storage flows seamlessly into the dining and living spaces. This area extends into a separate theatre room, perfect for entertainment, while sliding doors open onto a paved undercover pergola, ideal for year-round gatherings. The surrounding gardens offer a wonderful space for kids to play and for outdoor activities.

Price : \$630,000 - \$675,000
Land Size : 544 sqm
View : <https://www.ypa.com.au/8097183>

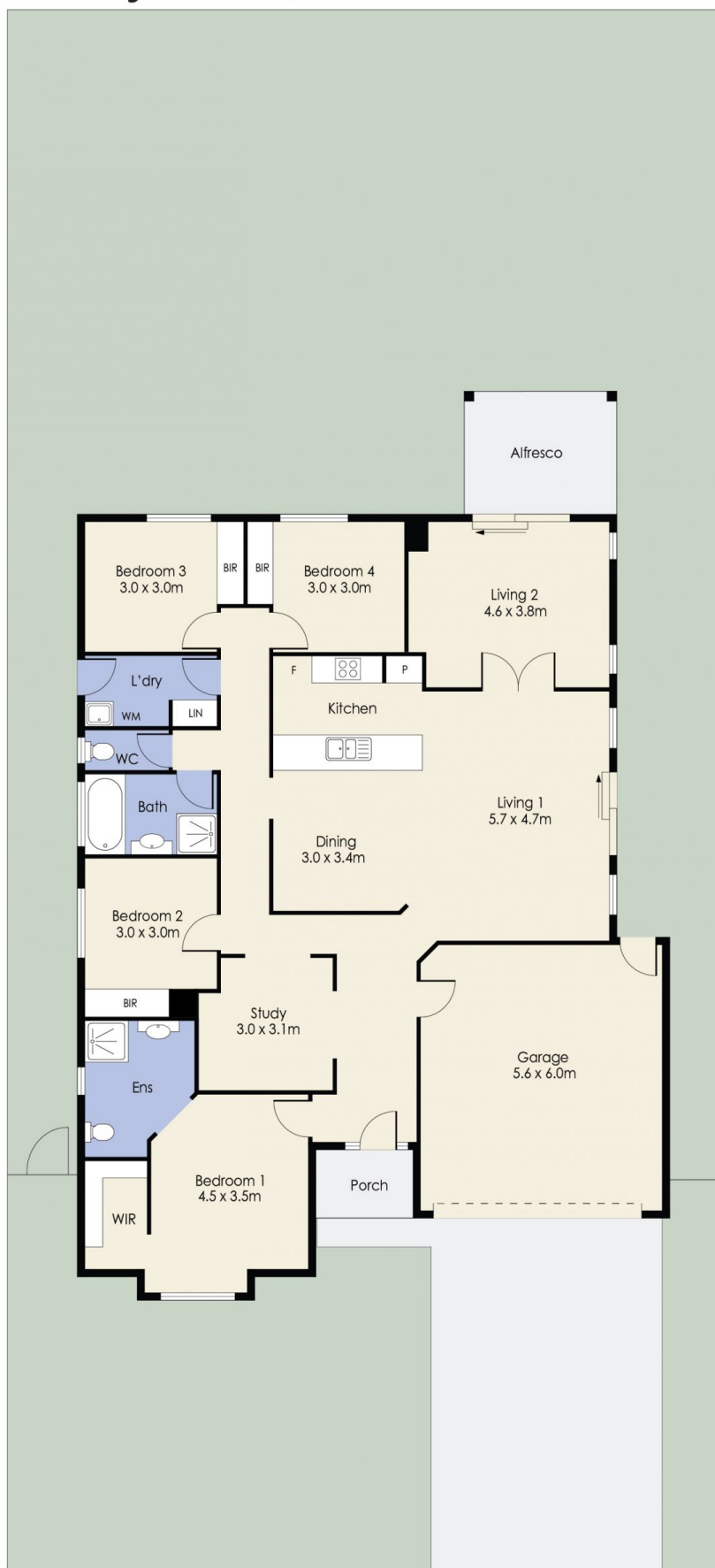


James Christou
0450 733 302



Danish Natha
0405 857 895

11 Surveyor St, WYNDHAM VALE



Whilst every attempt has been made to ensure the accuracy of the floor plan contained here, measurements of doors, windows, rooms and any other items are approximate and no responsibility is taken for any error, omission, or mis-statement. This plan is for illustrative purposes only and should be used as such by any prospective purchaser. The services, systems and appliances shown have not been tested and no guarantee as to their operability or efficiency can be given.