



26 Bethany Road Hoppers Crossing VIC

4 2 2

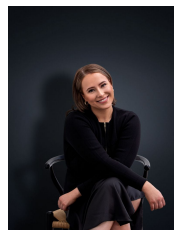
Immaculately presented and thoughtfully designed this spacious home is sure to impress. Situated in a great family friendly pocket of Hoppers Crossing you are positioned minutes to so many amenities including; The Grange P-12 College, Early learning Centres, Hogan's Corner Shopping complex, local shops & Pacific Werribee only 5 mins away!

Property features include:

- ? Four bedrooms, Master bedroom with built in robe and en-suite
- ? Formal lounge with adjacent dining room
- ? Kitchen with loads of cupboard space overlooking the second living area
- ? Large covered outdoor entertaining area
- ? Double carport with additional off-street parking

Price : \$500 pw

View : <https://www.ypa.com.au/8097957>



Ali Dowling
0450 778 972