



## 6 Pedley Way Truganina VIC

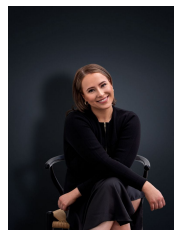
4 2 2

The perfect combination of city convenience and suburban tranquillity! 24 kilometres from Melbourne's CBD, situated within The Westbrook Estate - Ideal for anyone seeking a modern and family-friendly lifestyle.

As a resident, you will have access to an abundance of recreational options, with grand plans for further development. Notably, the shopping opportunities are set to be truly spectacular, with both major retailers and boutique brands coming together to create a large Town Centre near the estate's very own railway station. Moreover, the surrounding area has proposed schools and childcare centres, ensuring you won't need to venture very far for your daily essentials.

**Price** : \$560 pw

**View** : <https://www.ypa.com.au/8099049>



**Ali Dowling**  
0450 778 972

## Property Features