



2/9 Montana Drive Werribee VIC

3 2 1

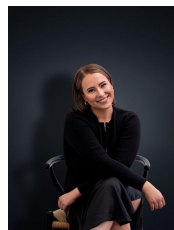
This modern unit with great street appeal will impress you further when you enter the home. Clean, light and airy are your first impressions. Close to schools, shops, public transport and freeway access.

Featuring:

- ? 3 bedrooms, master with ensuite and WIR
- ? 2 living areas
- ? Large kitchen adjoins the meals area
- ? Low maintenance yard with covered pergola and native plants.
- ? The kitchen has stainless steel appliances and ample cupboard and bench space.
- ? Ducted heating and split system cooling
- ? remote controlled single garage with internal access

Price : \$480 pw

View : <https://www.ypa.com.au/8101983>



Ali Dowling
0450 778 972

Disclaimer: The property is accepted as is at the start of the tenancy. Any requests for cleaning or enhancements must