



## 12 Yarrayne Street Rye VIC

2 1 3

Positioned on a private, elevated allotment of approximately 701m<sup>2</sup>, this fantastic two bedroom coastal tree top home offers a variety of exciting options.

As you head inside you are met with a beautiful natural light that floods the open plan living, kitchen and dining areas. Two generous sized bedrooms offering built in robes for your convenience.

Featuring low maintenance landscaping you are surrounded by beautiful native plants and beautiful Moonah Trees. From the light filled north facing outdoor entertaining area you will instantly feel at ease with the beautiful private tree top views.

Situated just moments from the Rye Foreshore and Number Sixteen Beach, Yarrayne Street combines relaxed

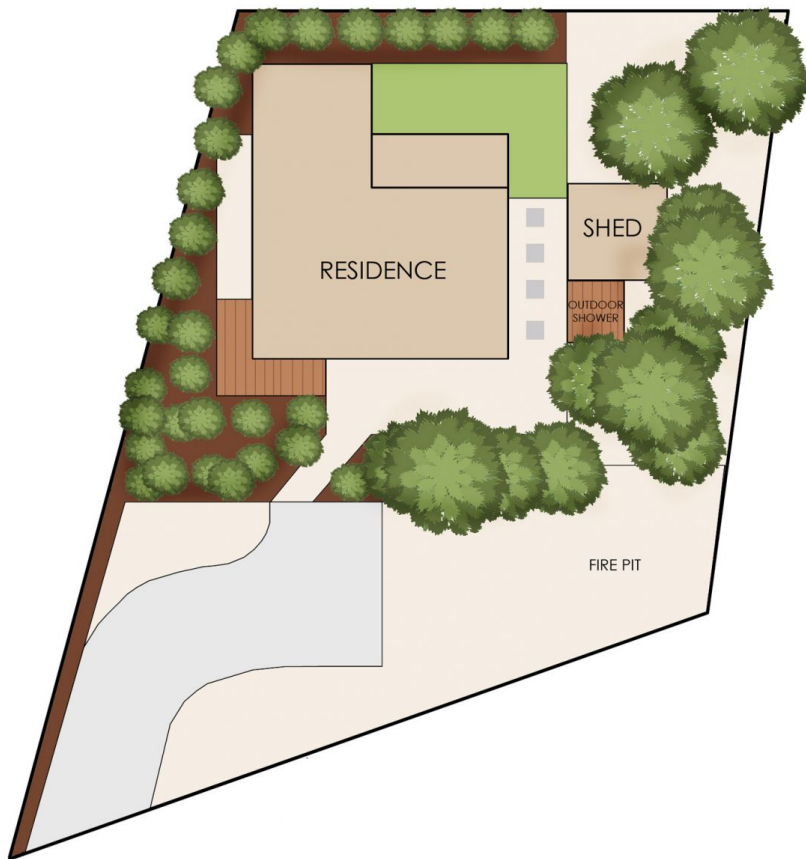
**Price** : \$780,000 - \$850,000  
**Land Size** : 701 sqm  
**View** : <https://www.ypa.com.au/8109820>



**Jade Springer**  
0437 410 791



**Kelsie Janssen**  
0417 245 204



Internal living area approx: 7 squares

Decking area approx: 4 squares

Total area approx: 11 squares



## 12 Yarrayne Street, Rye

© Produced by DND Floor Plans

This floorplan is for illustration purposes only and no warranty is given to its accuracy. Purchasers are advised to carry out their own investigations.