



11 Rushdale Court KINGS PARK VIC

3 1 2

Nestled in one of Kings Park's prime locations, 11 Rushdale Ct offers the perfect blend of comfort and convenience. Positioned on a generous 530sqm block, this charming family home features a spacious formal lounge and dining area, a beautifully designed kitchen, and three well-sized bedrooms.

Outside, the large backyard provides ample space for family gatherings and outdoor activities. Located within walking distance to both primary and secondary schools, the daily school run becomes effortless. With easy access to the freeway, commuting to the CBD is a breeze, while nearby public transport offers additional convenience. Local shops and parks are just moments away, ensuring all your lifestyle needs are met.

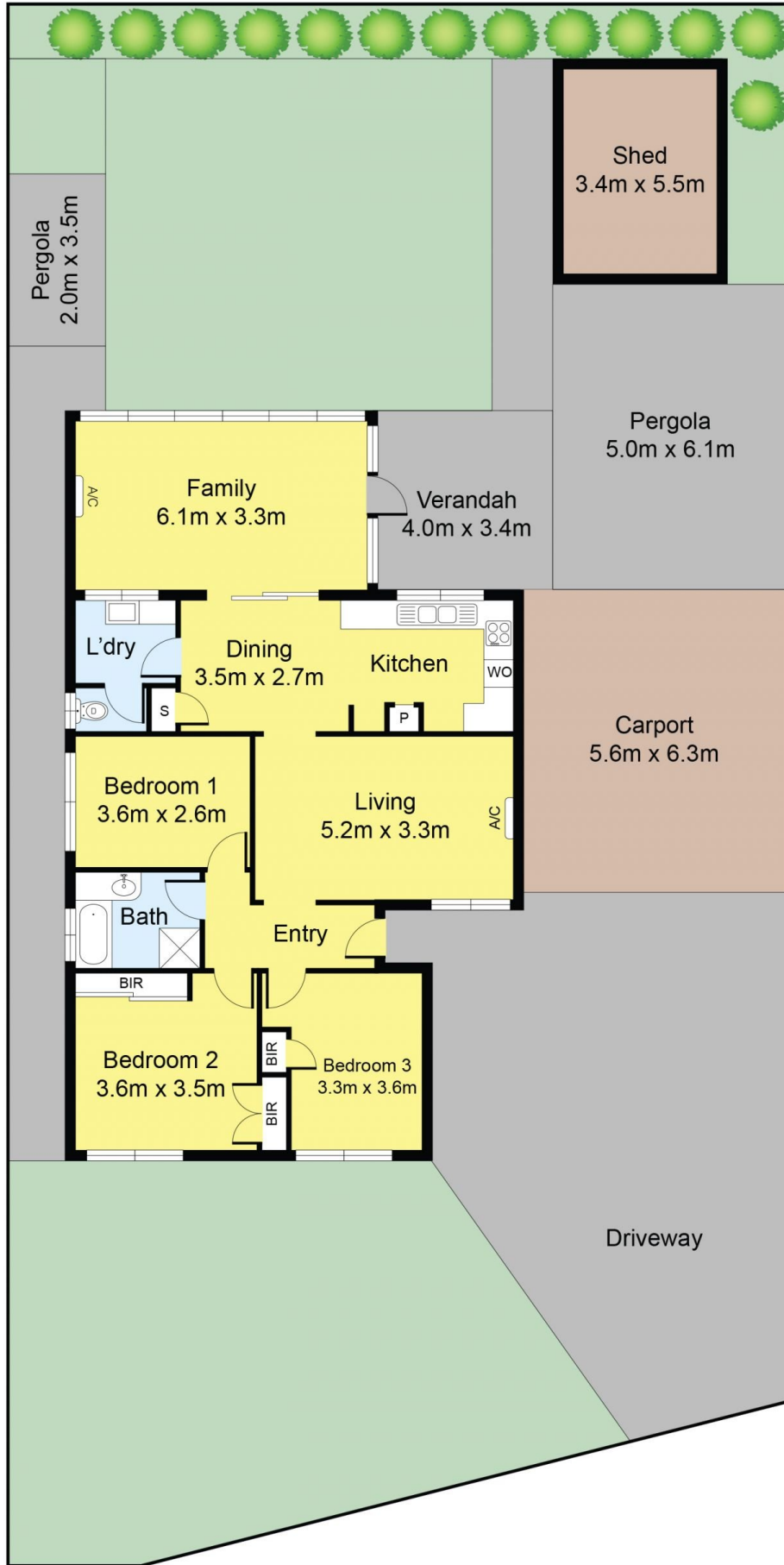
11 Rushdale Ct, Kings Park is more than a home; it's the

Price : \$660,000

View : <https://www.ypa.com.au/8110674>



Spencer Nguyen
0434 508 608



Disclaimer: Whilst we believe the contents of this document to be accurate, we suggest the prospective purchasers make any necessary enquiries to satisfy themselves. All measurements are approximate. We do not accept responsibility for any errors or omissions.

11 Rushdale Court, Kings Park

