

32 Domain Drive Hillside VIC

3 2 2

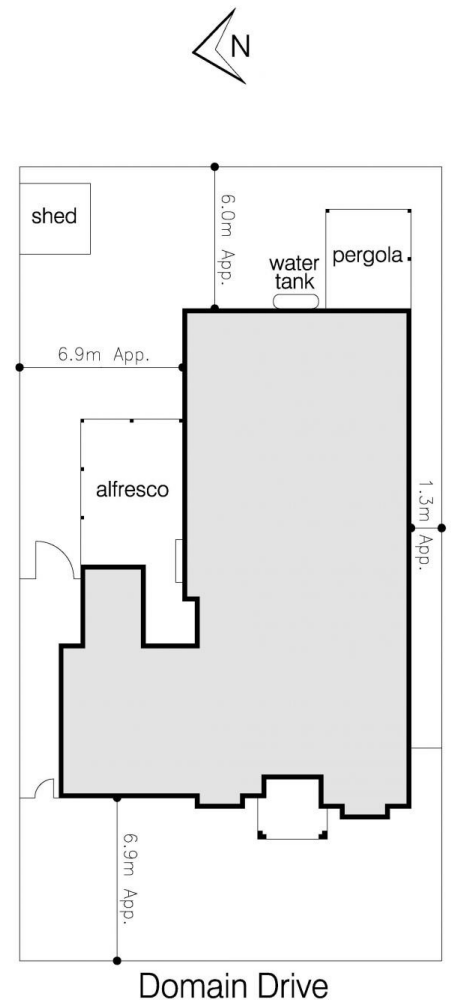
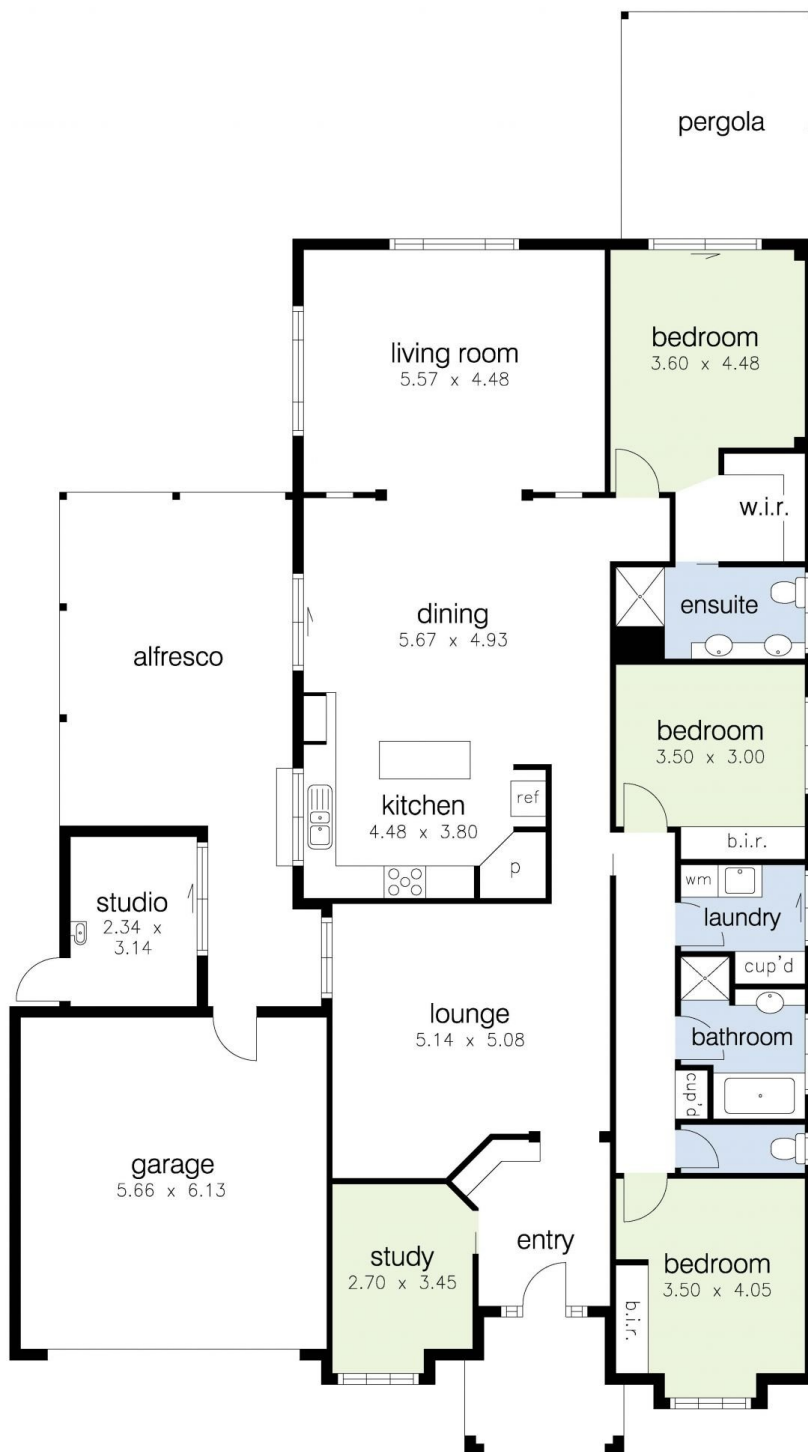
Nestled in one of Hillside's most tranquil and prestigious streets, this property offers the perfect blend of serenity and convenience. Enjoy a peaceful, leafy stroll to the Wattle Valley Drive shops, Hillside Recreation Reserve, and the picturesque Stony Hill Creek Trail. The upcoming shopping center on Banchory Avenue, Watergardens' retail outlets, and city-bound trains, along with the Calder Freeway, and top-rated schools (including Cana Catholic Primary, Sydenham-Hillside Primary, and Copperfield College) are all just moments away.

Situated in the coveted 'The Parks' estate, this home stands proudly in a prestigious, tree-lined cul-de-sac. Manicured gardens lead to a grand entrance, setting the tone for the elegance within. As you step inside, you are greeted by a spacious foyer that flows into a study and a large lounge area. The home boasts three generously

Price : AUCTION | \$850,000 - \$890,000
View : <https://www.ypa.com.au/8111005>



Menka Zdraveska
 0404 160 951



32 Domain Drive, Hillside

DISCLAIMER: All stated dimensions are approximate only. Particulars given are for general information only and do not constitute any representation on the part of the vendor or agent/agency.