



## 15 Cassell Street Werribee VIC

3 2 1

Featuring 3 bedrooms, 2 bathrooms, and a single-car garage with rear access, this residence is thoughtfully designed to enhance both daily living and entertaining. The home's striking freshly painted front facade and beautifully landscaped garden create an inviting first impression and standing it out amongst the neighbours. Inside, the spacious lounge, family, dining, and kitchen areas offer generous space for relaxation and social gatherings.

The master bedroom serves as a private retreat, complete with a walk-in robe and ensuite bathroom. It also boasts a balcony with stunning views of the Brentwood Park, ideal for savoring morning sunrises. Additional comforts include ducted heating and a brand new evaporative cooling ensuring year-round coziness. The large kitchen features modern stainless steel appliances.

Step outside to an expansive covered area perfect for

**Price** : \$560,000 - \$610,000  
**Land Size** : 250 sqm  
**View** : <https://www.ypa.com.au/8113079>

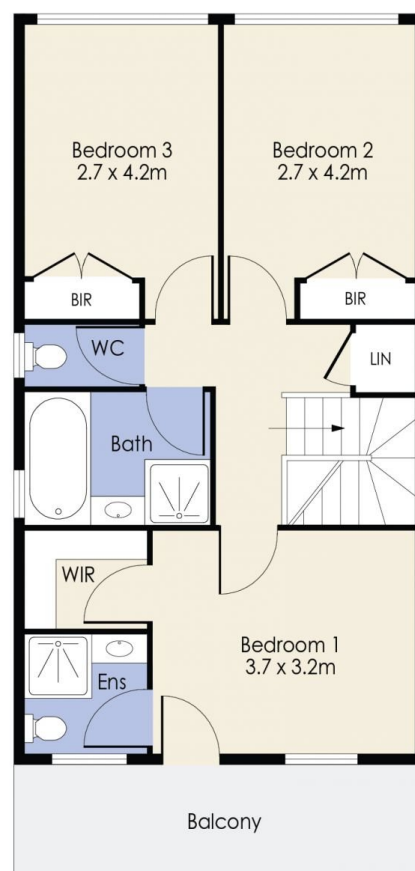
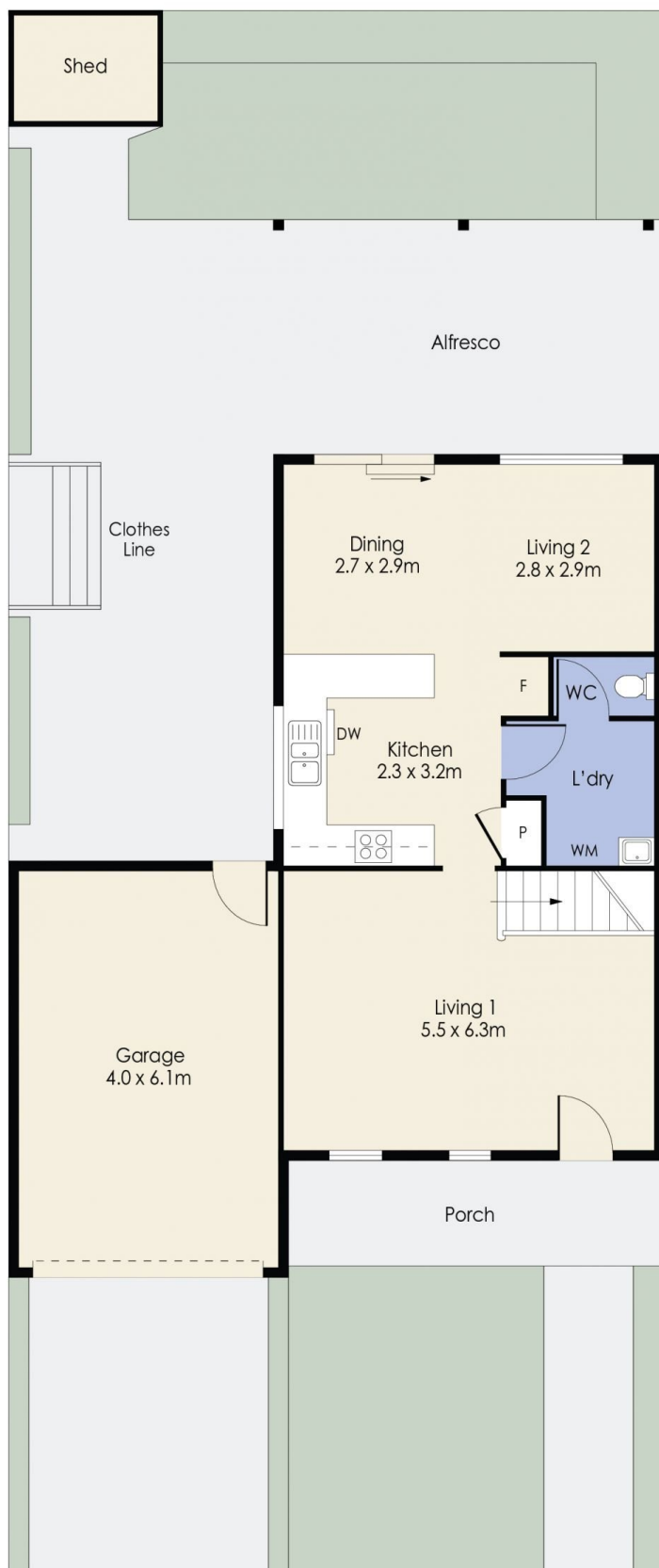


**James Christou**  
0450 733 302



**James Antonio**  
0401 889 248

# 15 Cassell Street, WERRIBEE



Whilst every attempt has been made to ensure the accuracy of the floor plan contained here, measurements of doors, windows, rooms and any other items are approximate and no responsibility is taken for any error, omission, or mis-statement. This plan is for illustrative purposes only and should be used as such by any prospective purchaser. The services, systems and appliances shown have not been tested and no guarantee as to their operability or efficiency can be given.