



26 Sacred Drive Sunbury VIC

4 2 2

Why wait to build when this stunning brand new home in the prestigious Redstone Estate has everything you desire? As you approach, beautifully landscaped gardens welcome you to this home, which is designed with a neutral colour palette, creating a bright and inviting atmosphere.

The well-thought-out floor plan centres around the heart of the home an open-plan kitchen, living, and dining area with large windows that flood the area with natural light. The modern kitchen is a chef's delight featuring stone benchtops, stainless steel Franke under bench oven, electric cooktop, dishwasher boasting ample cupboard and bench space. The spacious master bedroom is a true retreat, featuring a luxurious ensuite with a large shower with niches, floor-to-ceiling tiles, a walk-in robe, and additional built-in robes for all your storage needs.

Price : \$630,000 - \$660,000

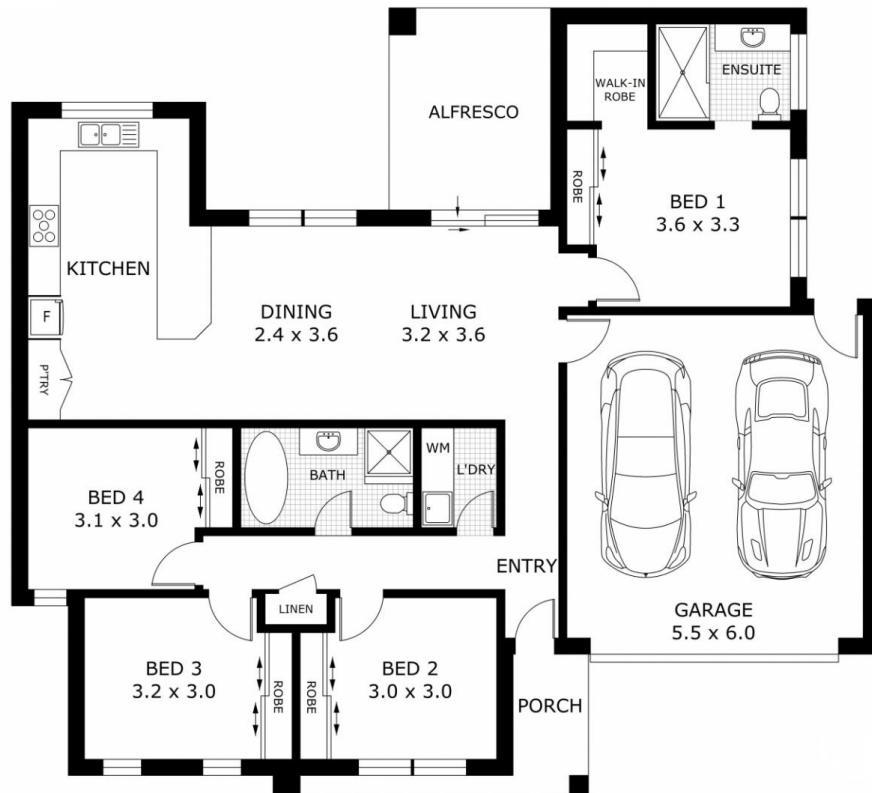
View : <https://www.ypa.com.au/8113909>



Lisa Totaro
0410 144 215



Cassandra Doria
0497 972 028



Disclaimer: All images, views and diagrams are indicative only. Dimensions, areas and landscape are indicative and subject to change without notice. Purchasers should check the plans and specifications included in the terms of the contract of sale carefully prior to signing the contract.