



9 Shipwright Parade Werribee VIC

4 2 2

Located in the ever popular Harpley Estate is this four bedroom home, right at the entry of the estate. Close to parklands, local schools and amenities. With four spacious bedrooms, master with walk in robe and ensuite, separate lounge and alfresco area this home is one you will not want to miss.

Property features include:

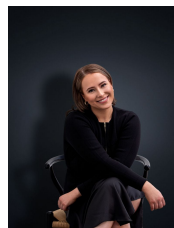
- ? Stainless steel appliances and dishwasher
- ? Open Plan Kitchen & Living with timber floating floorboards
- ? Low maintenance yards with alfresco

Extra features: ducted heating, double lock up garage on remote

Disclaimer: The property is accepted as is at the start of the

Price : \$480 pw

View : <https://www.ypa.com.au/8117030>



Ali Dowling
0450 778 972