



## 4 Slim Court Sunbury VIC

3 2 1

Nestled in a quiet and prestigious court in a tightly held pocket of Sunbury, this charming home offers a stunning outlook over the tranquil Spavin Lake Parkland.

From the moment you step inside, you'll be captivated by its warm, homely ambiance and sunlit spaces, making it the perfect retreat for those seeking both privacy and serene surroundings.

Upon entry, you'll find a spacious open-plan living area, beautifully laid with parquetry flooring, where the generous loungeroom invites you to relax while enjoying the peaceful views or your favourite movie. The adjoining dining area is perfect for family meals or entertaining guests, while the well-appointed kitchen offers ample storage, excellent bench space, and a functional design that any home chef will appreciate. The kitchen opens up to an inviting alfresco

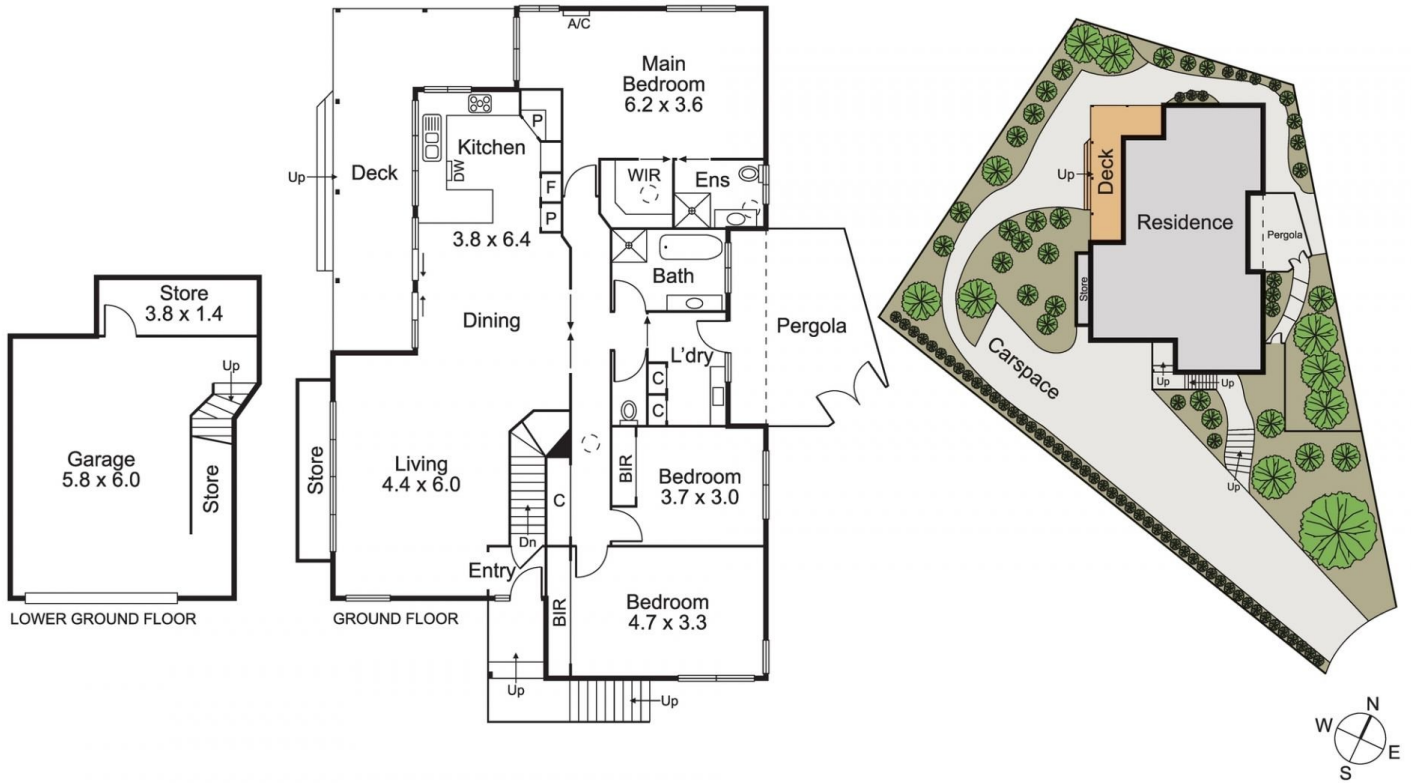
**Price** : \$780,000 - \$820,000  
**Land Size** : 886 sqm  
**View** : <https://www.ypa.com.au/8120421>



**Nic Owen**  
 0422 107 177



**Patrick Kilkenny**  
 0401 175 248



Disclaimer: All images, views and diagrams are indicative only. Dimensions, areas and landscape are indicative and subject to change without notice. Purchasers should check the plans and specifications included in the terms of the contract of sale carefully prior to signing the contract.