

56 Edith Street Tarneit VIC

3 2 2

Welcome to modern living at its finest! Located in the heart of Tarneit, this sleek and stylish townhouse offers the perfect blend of luxury, convenience, and comfort. With easy access to Riverdale Shopping Centre, Tarneit Train Station, and a range of reputable schools, this home is ideal for families and professionals alike.

Price : \$520 pw

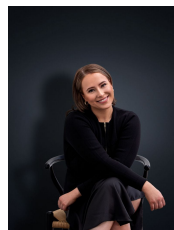
View : <https://www.ypa.com.au/8120554>

Why You'll Love This Property:

? Contemporary Design: Featuring a modern colour palette, chic décor, and luxurious finishes, this home exudes contemporary elegance and style.

? Spacious Living: Three well-appointed bedrooms with ample storage ensure space for everyone, while the open-plan layout provides plenty of room to relax and entertain.

? Smart Layout: Enjoy the convenience of a powder room



Ali Dowling
0450 778 972